

Printing System (M)

INSTRUCTION HANDBOOK

<Functions Edition>

Introduction

Chapter 1 Printer-related operation

- 1. Printer Settings
- 2. Memory Card / RAM Disk

Chapter 2 Software-related operation

- 1. Procedure for Installing and Printing with a Printer Driver
- 2. Windows XL Driver
- 3. Printer Driver for Windows 95/98
- 4. Printer Driver for Windows NT
- 5. Printer Driver for Windows 2000
- 6. Printer Driver for Macintosh

Introduction


About this On-Line Manual

This On-Line Manual is included with your Printing System (M) and should be read in combination with the Instruction Handbook <Set-Up Edition> for that product.

This manual contains information on making settings in your printer, as well as on installing and setting the printing properties for the corresponding Printer Drivers.

The explanations in this manual were written with the assumption that the user has a basic understanding of how to work in Microsoft Windows. For further information on using Windows, refer to your Microsoft Windows manual.

Trademark Information

- PRESCRIBE is a registered trademark of Kyocera Corporation.
- PRESCRIBE 2e and KPDL2 are trademarks of Kyocera Corporation.
- MS-DOS, Windows and Windows NT are trademarks of Microsoft Corporation.
- PCL and PJI are registered trademarks of Hewlett-Packard Company.
- PostScript is a registered trademark of Adobe Systems Incorporated.
- Ethernet is a registered trademark of Xerox Corporation.
- Novell and NetWare are registered trademarks of Novell, Inc.
- Centronics is a trademark of Centronics Data Computer Corporation.
- IBM and IBM PC-AT are trademarks of International Business Machines Corporation.
- PowerPC is a trademark of International Business Machines Corporation of America and other corporations.
- TrueType and Macintosh are registered trademarks of Apple Computer, Inc.
- AppleTalk is a trademark of Apple Computer, Inc.
- This product was developed using Tornado, the real-time operating system (ROTS) general development environment from Wind River Systems, Inc.
- This printer uses PeerlessPrintXL, a PCL compatibility system developed by Peerless Group, to emulate the HP LaserJet Printer Control Language (PCL6). PeerlessPrintXL is a trademark of Peerless Group (Redondo Beach, CA 90278, U.S.A.).
- **AGFA**  Contains UFST™ and MicroType® from Agfa Corporation.

All other company and product names contained in this Instruction Handbook are trademarks or registered trademarks of their respective companies. The designations ™ and ® will not be used in this handbook.

All rights reserved. No part of this material may be reproduced or transmitted in any form or by any means, electronic or mechanical, including photocopying, recording or by any information storage and retrieval system, without permission in writing from the Publisher.

Legal Restriction On Copying

- It may be prohibited to copy copyrighted material without permission of the copyright owner.
- It is prohibited under any circumstances to copy domestic or foreign currencies.
- Copying other items may be prohibited.

IBM PROGRAM LICENSE AGREEMENT

THE DEVICE YOU HAVE PURCHASED CONTAINS ONE OR MORE SOFTWARE PROGRAMS ("PROGRAMS") WHICH BELONG TO INTERNATIONAL BUSINESS MACHINES CORPORATION ("IBM"). THIS DOCUMENT DEFINES THE TERMS AND CONDITIONS UNDER WHICH THE SOFTWARE IS BEING LICENSED TO YOU BY IBM. IF YOU DO NOT AGREE WITH THE TERMS AND CONDITIONS OF THIS LICENSE, THEN WITHIN 14 DAYS AFTER YOUR ACQUISITION OF THE DEVICE YOU MAY RETURN THE DEVICE FOR A FULL REFUND. IF YOU DO NOT SO RETURN THE DEVICE WITHIN THE 14 DAYS, THEN YOU WILL BE ASSUMED TO HAVE AGREED TO THESE TERMS AND CONDITIONS.

The Programs are licensed not sold. IBM, or the applicable IBM country organization, grants you a license for the Programs only in the country where you acquired the Programs. You obtain no rights other than those granted you under this license.

The term "Programs" means the original and all whole or partial copies of it, including modified copies or portions merged into other programs. IBM retains title to the Programs. IBM owns, or has licensed from the owner, copyrights in the Programs.

1. License

Under this license, you may use the Programs only with the device on which they are installed and transfer possession of the Programs and the device to another party. If you transfer the Programs, you must transfer a copy of this license and any other documentation to the other party. Your license is then terminated. The other party agrees to these terms and conditions by its first use of the Program.

You may not:

- 1) use, copy, modify, merge, or transfer copies of the Program except as provided in this license;
- 2) reverse assemble or reverse compile the Program; or
- 3) sublicense, rent, lease, or assign the Program.

2. Limited Warranty

The Programs are provided "AS IS."

THERE ARE NO OTHER WARRANTIES COVERING THE PROGRAMS (OR CONDITIONS), EXPRESS OR IMPLIED, INCLUDING, BUT NOT LIMITED TO, THE IMPLIED WARRANTIES OF MERCHANTABILITY AND FITNESS FOR A PARTICULAR PURPOSE.

Some jurisdictions do not allow the exclusion of implied warranties, so the above exclusion may not apply to you.

SUPPLEMENT TO AGREEMENT FOR SOFTWARE BUNDLING AND DISTRIBUTION FOR ALDC

3. Limitation of Remedies

IBM's entire liability under this license is the following;

- 1) For any claim (including fundamental breach), in any form, related in any way to this license, IBM's liability will be for actual damages only and will be limited to the greater of ;
 - a) the equivalent of U.S.\$25,000 in your local currency; or
 - b) IBM's then generally available license fee for the Program

This limitation will not apply to claims for bodily injury or damages to real or tangible personal property for which IBM is legally liable. IBM will not be liable for any lost profits, lost savings, or any incidental damages or other economic consequential damages, even if IBM, or its authorized supplier, has been advised of the possibility of such damages. IBM will not be liable for any damages claimed by you based on any third party claim. This limitation of remedies also applies to any developer of Programs supplied to IBM. IBM's and the developer's limitations of remedies are not cumulative. Such developer is an intended beneficiary of this Section. Some jurisdictions do not allow these limitations or exclusions, so they may not apply to you.

4. General

You may terminate your license at any time. IBM may terminate your license if you fail to comply with the terms and conditions of this license. In either event, you must destroy all your copies of the Program. You are responsible for payment of any taxes, including personal property taxes, resulting from this license. Neither party may bring an action, regardless of form, more than two years after the cause of action arose. If you acquired the Program in the United States, this license is governed by the laws of the State of New York. If you acquired the Program in Canada, this license is governed by the laws of the Province of Ontario. Otherwise, this license is governed by the laws of the country in which you acquired the Program.

Typeface Trademark Acknowledgement

All resident fonts in this printer are licensed from Agfa Corporation.

Helvetica, Palatino and Times are registered trademarks of Linotype-Hell AG.

ITC Avant Garde Gothic, ITC Bookman, ITC ZapfChancery and ITC Zapf Dingbats are registered trademarks of International Typeface

Corporation.

Agfa Japan License Agreement

1. "Software" shall mean the digitally encoded, machine readable, scalable outline data as encoded in a special format as well as the UFST Software.
2. You agree to accept a non-exclusive license to use the Software to reproduce and display weights, styles and versions of letters, numerals, characters and symbols ("Typefaces") solely for your own customary business. Agfa Japan retains all rights, title and interest to the Software and Typefaces and no rights are granted to you other than a License to use the Software on the terms expressly set forth in this Agreement.
3. To protect proprietary rights of Agfa Japan, you agree to maintain the Software and other proprietary information concerning the Typefaces in strict confidence and to establish reasonable procedures regulating access to and use of the Software and Typefaces.
4. You agree not to duplicate or copy the Software or Typefaces, except that you may make one backup copy.
5. This License shall continue until the last use of the Software and Typefaces, unless sooner terminated. This License may be terminated by Agfa Japan if you fail to comply with the terms of this License and such failure is not remedied within thirty (30) days after notice from Agfa Japan. When this License expires or is terminated, you shall either return to Agfa Japan or destroy all copies of the Software and Typefaces and documentation as requested.
6. You agree that you will not modify, alter, disassemble, decrypt, reverse engineer or decompile the Software.
7. Agfa Japan warrants that for ninety (90) days after delivery, the Software will perform in accordance with Agfa Japan-published specifications. Agfa Japan does not warrant that the Software is free from all bugs, errors and omissions. THE PARTIES AGREE THAT ALL OTHER WARRANTIES, EXPRESSED OR IMPLIED, INCLUDING WARRANTIES OF FITNESS FOR A PARTICULAR PURPOSE AND MERCHANTABILITY, ARE EXCLUDED.
8. Your exclusive remedy and the sole liability of Agfa Japan in connection with the Software and Typefaces is repair or replacement of defective parts, upon their return to Agfa Japan. IN NO EVENT WILL AGFA JAPAN BE LIABLE FOR LOST PROFITS, LOST DATA, OR ANY OTHER INCIDENTAL OR CONSEQUENTIAL DAMAGES, OR ANY DAMAGES CAUSED BY ABUSE OR MISAPPLICATION OF THE SOFTWARE AND TYPEFACES.
9. New York, U.S.A. law governs this Agreement.
10. You shall not sublicense, sell, lease, or otherwise transfer the Software and/or Typefaces without the prior written consent of Agfa Japan.
11. Use, duplication or disclosure by the Government is subject to restrictions as set forth in the Rights in Technical Data and Computer Software clause at FAR 252-227-7013, subdivision (b)(3)(ii) or subparagraph (c)(1)(ii), as appropriate. Further use, duplication or disclosure is subject to restrictions applicable to restricted rights software as set forth in FAR 52.227-19 (c)(2).
12. YOU ACKNOWLEDGE THAT YOU HAVE READ THIS AGREEMENT, UNDERSTAND IT, AND AGREE TO BE BOUND BY ITS TERMS AND CONDITIONS. NEITHER PARTY SHALL BE BOUND BY ANY STATEMENT OR REPRESENTATION NOT CONTAINED IN THIS AGREEMENT. NO CHANGE IN THIS AGREEMENT IS EFFECTIVE UNLESS WRITTEN AND SIGNED BY PROPERLY AUTHORIZED REPRESENTATIVES OF EACH PARTY.

1. Printer Settings

IMPORTANT!

All setting items and the selection of their actual settings are accomplished in this machine based on a maximum 3-digit entry system. Refer to "1-2 List of settings" on page 1-3 for information regarding the various items as well as their corresponding menu numbers and available settings.

1-1 Procedure for making settings

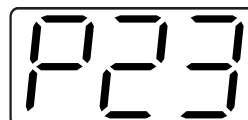
1

Press the Printer key. The machine will switch to the printer mode and "P00" will appear in the copy quality/magnification display.



2

Use the "+" and "-" keys to scroll through the menu numbers one number at a time. (Any menu number that does not have a corresponding setting item will be skipped and the next viable menu number that DOES have an available setting will be displayed.)



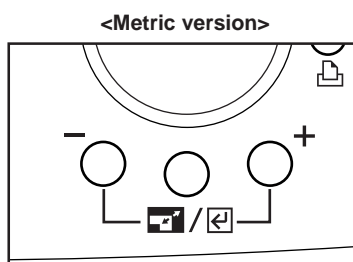
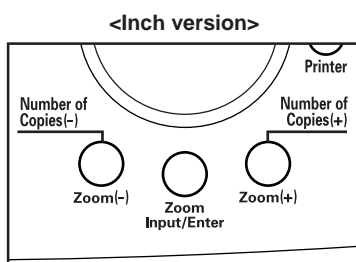
3

Select the desired setting.

Note

Settings are normally changed by using the "+" and "-" keys to select a value, or by typing in the desired value directly. Press the Enter key when you are finished in order to register the selected setting.

When typing in a network address, press the Enter key after each block of 3 digits.



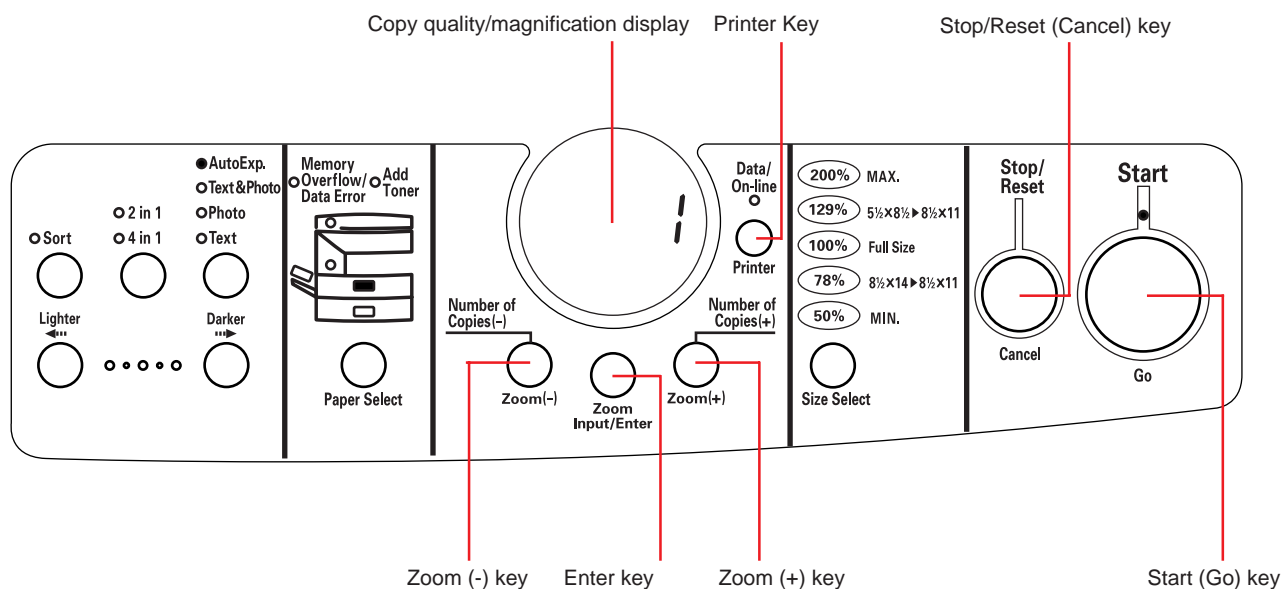
4

Press the Printer key again to switch back to the copier mode.

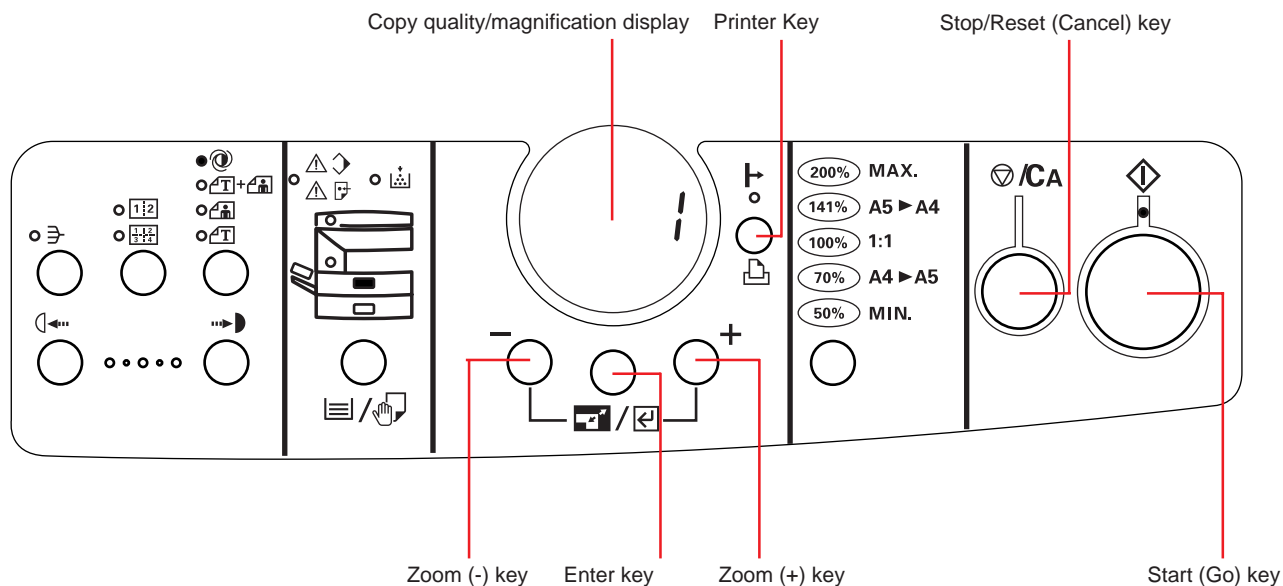
1. Printer Settings

■ Operation keys

<Inch version>



<Metric version>



1. Printer Settings

1-2 List of settings

Menu number	Item	Available settings	Remarks
P11	Printer Status Page print out Prints out a list of such items as the current printer default settings and memory volume, etc.	-- --	Print out will begin as soon as the corresponding menu number is displayed and the Enter key pressed.
P20	Parallel TX/RX mode Sets the transmission and reception mode when the printer is connected to your computer with a parallel interface.	(1) Auto (2) Normal (3) High Speed (4) Nibble (high)	
P21	NetWare ON/OFF	(1) On (2) Off	Available only when the Network Card is installed.
P22	NetWare frame type Sets the NetWare frame type.	(1) Auto (2) 802.3 (3) Ethernet II (4) 802.2 (5) 802.3 SNAP	Available only when the Network Card is installed.
P23	TCP/IP ON/OFF	(1) On (2) Off	Available only when the Network Card is installed.
P24	DHCP ON/OFF	(1) On (2) Off	Available only when the Network Card is installed.
P25	IP address	Enter the address.	Available only when the Network Card is installed.
P26	Subnet Mask	Enter the address.	Available only when the Network Card is installed.
P27	Gateway address	Enter the address.	Available only when the Network Card is installed.
P28	EtherTalk ON/OFF	(1) On (2) Off	Available only when the Network Card is installed.
P29	Network Card Status Page print out ON/OFF Sets whether a Status Page regarding conditions in the Network Card will be printed out as well when the standard Status Page for the printer (menu: P11) or that for use by your service representative (menu: P76) are printed out. A more detailed Status Page is printed out together with the "Service Rep Status Page print out" setting (menu: P76).	(1) On (2) Off	Available only when the Network Card is installed.
P30	Emulation protocol (parallel interface) Sets the emulation protocol that will be used.	(1) Line Printer (2) IBM Proprinter (3) DIABLO 630 (4) EPSON LQ-850 (5) PCL 6 (6) KPDL (7) KPDL (AUTO)	

1. Printer Settings

Menu number	Item	Available settings	Remarks
P31	KPDL Error Report print out ON/OFF Sets whether an Error Report will be automatically printed out whenever a KPDL error occurs.	(1) On (2) Off	
P32	Auto emulation switching (parallel interface) Sets the back-up emulation that, depending upon the type of data received, may be switched to for printing out when "KPDL (AUTO)" (setting: 7) is selected under the "Emulation protocol" setting (menu: P30).	(1) Line Printer (2) IBM Proprinter (3) DIABLO 630 (4) EPSON LQ-850 (5) PCL 6	
P35	Emulation protocol (network interface) Sets the emulation protocol that will be used.	(1) Line Printer (2) IBM Proprinter (3) DIABLO 630 (4) EPSON LQ-850 (5) PCL 6 (6) KPDL (7) KPDL (AUTO)	Available only when the Network Card is installed.
P37	Auto emulation switching (network interface) Sets the back-up emulation that, depending upon the type of data received, may be switched to for printing out when "KPDL(AUTO)" (setting: 7) is selected under the "Emulation protocol" setting (menu: P35)	(1) Line Printer (2) IBM Proprinter (3) DIABLO 630 (4) EPSON LQ-850 (5) PCL 6	Available only when the Network Card is installed.
P40	Number of copies	001 - 999	
P42	Page Protect If "AUTO" (setting: 1) is selected here, the machine will monitor the data and, if necessary, will automatically turn Page Protect ON. If a "Print overrun" error (error code: E80) does happen to occur even then, the machine will automatically change the Page Protect setting to "ON" (setting: 2).	(1) Auto (2) On	
P43	Line Feed (LF) handling (parallel interface)	(1) LF only (2) CR and LF (3) Ignore LF	
P44	Line Feed (LF) handling (network interface)	(1) LF only (2) CR and LF (3) Ignore LF	Available only when the Network Card is installed.
P45	Carriage Return (CR) handling (parallel interface)	(1) CR only (2) CR and LF (3) Ignore CR	
P46	Carriage Return (CR) handling (network interface)	(1) CR only (2) CR and LF (3) Ignore CR	Available only when the Network Card is installed.

1. Printer Settings

Menu number	Item	Available settings	Remarks
P47	Wide A4 ON/OFF Increases the printing area on A4 size paper.	(1) On (2) Off	
P48	Printing orientation (parallel interface)	(1) Portrait (2) Landscape	
P49	Printing orientation (network interface)	(1) Portrait (2) Landscape	Available only when the Network Card is installed.
P50	Smoothing ON/OFF Allows a printing resolution of an interpolated 2400 dpi x 600 dpi through the smoothing process.	(1) On (2) Off	
P51	EcoPrint ON/OFF Allows printing in a toner-saving mode. This mode is especially suited for test pages, etc., where high printing quality is not required.	(1) On (2) Off	
P52	Printing resolution	(1) 300 dpi (2) 600 dpi	
P55	RAM disk ON/OFF	(1) On (2) Off	At least 16 MB of additional memory (option) must be installed.
P56	RAM disk size Sets the amount of memory that will be used as a RAM disk. The maximum size that can be selected is the total amount of memory installed minus the amount used by the system (9 MB).	01 - 99 (MBytes)	
P62	Bypass mode If "First" (setting: 2) is selected here and there is paper set in the Multi-Bypass, paper feed will be accomplished from the Multi-Bypass.	(1) Cassette (2) First	
P70	Force-print time-out If "000" seconds is selected here, successive pages will not be printed until they are manually force-printed (by pressing the Start (Go) key in the printer mode).	000 - 495 (sec.)	

1. Printer Settings

Menu number	Item	Available settings	Remarks
P71	Receive dump mode The data that the printer receives for debugging programs and files is turned into hexadecimal code and printed out. If "OK" (setting: 1) is selected here, this receive dump mode will be activated. The receive dump mode will be canceled under the following circumstances: <ul style="list-style-type: none"> • The Start (Go) key is pressed in the printer mode. • A force-print time-out occurs. 	(1) OK	
P72	Printer reset Resets the Printer Board only even without turning the power to the machine OFF.	(1) OK	
P73	Resource protect mode Protects the resource data of fonts and macros downloaded through PCL6 and, even if the emulation protocol is switched, the PCL resource will be saved in the printer's memory. If "Permanent" (setting: 2) is selected here, temporary resources will not be saved. If, however, "Permanent/Temporary" (setting: 3) is selected, temporary resources will also be saved. Permanent/Temporary	(1) Off (2) Permanent (3) Permanent/Temporary	At least 16 MB of additional memory (option) must be installed.
P74	Auto Continue ON/OFF If one of the following error messages appears and "On" has been selected here, the error state will be released and the printing operation will be restarted automatically after a specified amount of time. "Memory overflow (error code : E70)" "Print overrun (error code : E80)"	(1) On (2) Off	
P75	Recovery time for Auto Continue Sets the amount of time before Auto Continue engages when "On" (setting: 1) is selected under the "Auto Continue ON/OFF" setting (menu: P74). If "000" seconds is selected here, Auto Continue will engage immediately after the error.	000 - 495 (sec.)	
P76	Service Rep Status Page print out Prints out a Status Page for use by your service representative.	— — —	Print out will begin as soon as the corresponding menu number is displayed and the Enter key pressed.

2. Memory Card / RAM Disk

2-1 Memory Card

This machine comes equipped with a slot for inserting a Memory Card.

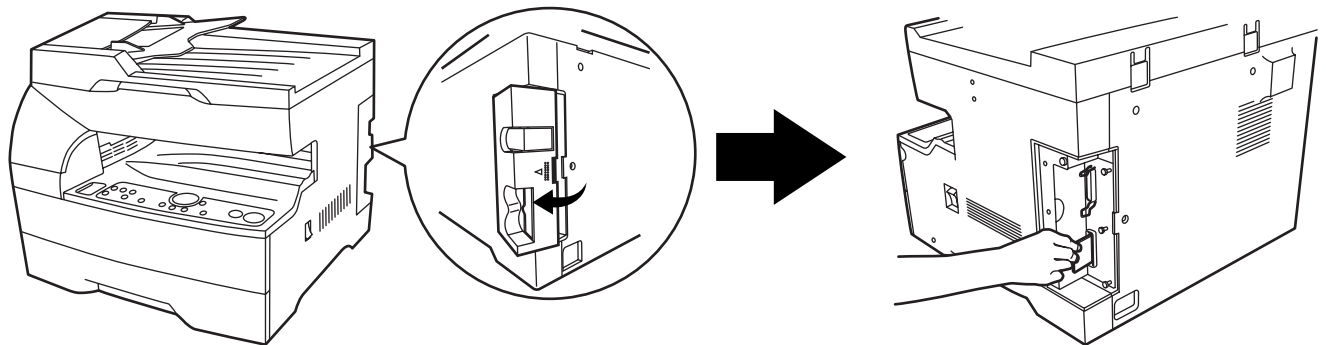
Use a Memory Card that contains fonts in order to print with fonts other than those already installed in the machine, or use the card to save and then read print data.

Inserting the Memory Card

Insert the Memory Card into the slot carefully with the front of the card facing the rear of the machine.

IMPORTANT!

BE SURE to turn the main switch OFF (O) BEFORE inserting or removing the Memory Card.



* The Memory Card is managed through printer control commands received from your computer. Refer to "2-3 Printer control commands" on page 2-2.

2-2 RAM Disk

In this machine, it is possible to create a RAM Disk, or a portion of memory that is used as a virtual disk. By creating a RAM Disk of a desired size from among the total memory in the printer, it is possible to perform electronic sorting (which shortens the overall time required for printing) as well as to save data to and retrieve data from that disk very quickly.

Additional memory (option) must be installed before a RAM Disk can be created.

IMPORTANT!

The RAM Disk is created from that portion of the printer's memory that is normally available to the user. Thus, if the size of the RAM disk created is too large, printing speed may actually be decreased or the machine may run out of available memory.

WARNING: Resetting the printer or turning the main switch OFF (O) will erase all data written to the RAM Disk.

The factory default setting for the RAM Disk is "OFF". In order to create a RAM Disk it is necessary to change the setting on the operation panel of the copier itself. Refer to "1. Printer Settings" on page 1-1, as appropriate to your machine, for information on the appropriate procedure.

* The RAM Disk can be used for saving and reading print data.

* Saving and reading data on the RAM Disk is managed through printer control commands received from your computer. Refer to "2-3 Printer control commands" on page 2-2.

2. Memory Card / RAM Disk

2-3 Printer control commands

It is possible to issue simple commands to the Memory Card and RAM Disk from the MS-DOS Prompt in Windows.

2-3-1 Using printer control commands

A printer control command line includes "!R!" (Command operation start), as well the actual commands and parameters that are to be implemented and that are entered after that.

The basic configuration of a printer control command line is as follows:

[Example] To delete the print data entitled "SAMPLE.txt" from the Memory Card

ECHO	!R!	RWER	D,A,2,"SAMPLE.txt";	EXIT;	>LPT1
A	B	C	D	E	F

A: DOS command

B: Command operation start

C: Command ("RWER D" is the command to delete data)

D: Parameters ("A" refers to the Memory Card, "2" refers to the type of data [in this case print data] and "SAMPLE.txt" is the name of the corresponding partition)

E: Command operation end

F: Printer connection port (Network: "PRN", Local: "LPT1", etc.)

CAUTIONS

- When issuing DOS commands in the Japanese input mode, ALWAYS use JIS ASCII (JIS C6220) characters. Kanji Code and Kanji Half-Space Code input will not work.
- Enter all commands in uppercase (capital) letters.
- Be sure to enter a semi-colon (;) at the end of each standard command [shown as "C" in the example above] (or after the corresponding parameter, if included), and separate each individual parameter with a comma (,).
- Be sure to enter a space before and after the "!R!" command, as well as before "EXIT;".

2. Memory Card / RAM Disk

2-3-2 Formatting the Memory Card

Perform the following procedure when you want to initialize the Memory Card from your computer.

IMPORTANT!

WARNING:: Initializing the Memory Card will erase all data in the card. Make sure that you want to initialize that Memory Card before starting the procedure.

Procedure

- 1 Insert the Memory Card that you want to initialize into the Memory Card slot.
- 2 Open an MS-DOS Prompt in Windows.
- 3 Type in the command to format the Memory Card and then press the ENTER key.

```
C:\WINDOWS>ECHO !R! RWER F,A; EXIT;>LPT1
```
- 4 Once the Memory Card is formatted, the "FORMAT INFORMATION" report will be printed out.

2-3-3 Writing print data

Perform the following procedure when you want to write print data to a Memory Card or RAM Disk from your computer.

- * Verify beforehand that the Memory Card is in a write-enabled state and that the RAM Disk is turned ON.

Procedure

- 1 Open an MS-DOS Prompt in Windows.
- 2 Type in the command to write data and then press the ENTER key.
[Example] To write the print data entitled "SAMPLE.txt" to a Memory Card
 - * To write the data to a RAM Disk, simply change the "A" parameter to "0".

```
C:\WINDOWS>ECHO !R! RWER W,A,2,"SAMPLE.txt";>LPT1_
```
- 3 Send the print data from your computer.

```
C:\WINDOWS>COPY /b SAMPLE.txt LPT1
```
- 4 Once the print data is sent, the next command can be sent.

```
C:\WINDOWS>ECHO !R! WRED; EXIT;>LPT1_
```
- 5 Print out the Partition List to verify whether or not the data was written properly.
 - * Refer to "2-3-7 Printing out the Partition List" for information on printing that list.

2. Memory Card / RAM Disk

2-3-4 Writing font data

Perform the following procedure when you want to write font data to a Memory Card or RAM Disk from your computer. At the same time as the font data is written to disk, it will be sent to the printer as well.

- * Verify beforehand that the Memory Card is in a write-enabled state and that the RAM Disk is turned ON.
- * Only TrueType fonts can be written to the Memory Card or RAM Disk.

Procedure

1 Open an MS-DOS Prompt in Windows.

2 Type in the command to write data and then press the ENTER key.

[Example] To write the font data entitled "FONT1" to a Memory Card

```
C:\WINDOWS>ECHO !R! RWER S,12,3"4FONT1", "5FONT",45040;>LPT1
```

NOTES

The parameters contained within the command line are as follows:

- 1: "A" refers to the Memory Card and "0" refers to the RAM Disk
- 2: "0" refers to a TrueType font, "1" refers to a Japanese TrueType font, "2" refers to a Japanese TrueType Collection font
- 3: File name
- 4: Font name
- 5: Font data length (binary data bytes)

3 Send the font data from your computer.

```
C:\WINDOWS>COPY /b FONT1 LPT1_
```

4 Once the font data is sent, the next command can be sent.

```
C:\WINDOWS>ECHO !R! WRED; EXIT;>LPT1_
```

5 Print out the Partition List to verify whether or not the data was written properly.

- * Refer to "2-3-7 Printing out the Partition List" for information on printing that list.

2. Memory Card / RAM Disk

2-3-5 Reading print data

Perform the following procedure when you want to read print data that has been saved on a Memory Card or RAM Disk.

- * Verify beforehand that the Memory Card is in a write-enabled state and that the RAM Disk is turned ON.
- * To verify saved data and the corresponding partition name, it is helpful to print out the Partition List. Refer to “2-3-7 Printing out the Partition List” for information on printing that list.

Procedure

1 Open an MS-DOS Prompt in Windows.

2 Type in the command to read data and then press the ENTER key.

[Example] To read the print data entitled “SAMPLE.txt” from a Memory Card

- * To read the data from a RAM Disk, simply change the “A” parameter to “0”.

```
C:\WINDOWS>ECHO !R! RWER R,A,2,“SAMPLE.txt”; EXIT;>LPT1
```

3 Print out of the corresponding data will begin.

2-3-6 Deleting print data or font data

Perform the following procedure when you want to delete print data or font data that has been saved on a Memory Card or RAM Disk.

- * Verify beforehand that the Memory Card or RAM Disk contains the data that you want to delete.
- * To verify saved data and the corresponding partition name, it is helpful to print out the Partition List. Refer to “2-3-7 Printing out the Partition List” for information on printing that list.

Procedure

1 Open an MS-DOS Prompt in Windows.

2 Type in the command to delete data and then press the ENTER key.

[Example] To delete the print data entitled “SAMPLE.txt” from a Memory Card

- * To delete the data from a RAM Disk, simply change the “A” parameter to “0”.
- * To delete font data, simply change the “2” parameter to “1”.

```
C:\WINDOWS>ECHO !R! RWER D,A,2,“SAMPLE.txt”; EXIT;>LPT1
```

3 Deletion of the corresponding data will begin.

4 Print out the Partition List to verify whether or not the data was deleted properly.

2. Memory Card / RAM Disk

2-3-7 Printing out the Partition List

Perform the following procedure when you want to print out the Partition List in order to verify the print data and font data that has been saved on a Memory Card or RAM Disk.

Procedure

1 Open an MS-DOS Prompt in Windows.

2 Type in the command to print out the Partition List and then press the ENTER key.

[Example] To print out the Partition List for a Memory Card

* To print out the Partition List for a RAM Disk, simply change the "A" parameter to "0". If you do not include this parameter, both Partition Lists will be printed out.

```
C:\WINDOWS>ECHO !R! RWER L,A; EXIT;>LPT1_
```

3 Print out of the Partition List will begin.

2-3-8 Auto Partition List print out ON/OFF

It is possible to have a Partition List printed out automatically any time data is written to a Memory Card or RAM Disk. Perform the following procedure when you want to change the setting for automatic print out.

Procedure

1 Open an MS-DOS Prompt in Windows.

2 Type in the command to have the Partition List printed out automatically and then press the ENTER key.

[Example] To turn Auto Partition List print out ON

* To turn Auto Partition List print out OFF, simply change the "E" parameter to "D".

```
C:\WINDOWS>ECHO !R! RWER I,E; EXIT;>LPT1_
```


1. Procedure for Installing and Printing with a Printer Driver

1-1 Included printer drivers

The following printer drivers are included with this product.

* Each type of printer driver has a version appropriate to a specific model of copy machine. Be sure to choose the driver that is appropriate for your copier.

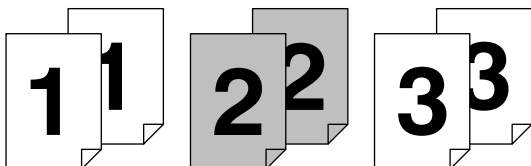
Driver type	Description	Compatible OS
Universal driver	This driver has superior compatibility with application software, thereby enabling WYSIWYG printing.	Windows 95/98 Windows NT4.0 Windows 2000
XL driver	By attaching optional equipment it is possible to easily extend printer functionality. This driver will enable you to use such compound printer functions to their fullest.	Windows NT4.0 Windows 2000
KPDL2 driver	This driver is compatible with Adobe PostScript 2.	Windows 95/98 Windows NT4.0 Windows 2000
Macintosh PPD file	A PPD (PostScript Printer Description) file is included for use with this product. Use "LaserWriter 8" as the printer driver for your Mac OS.	Macintosh System 7.61 or later

■ Collator driver

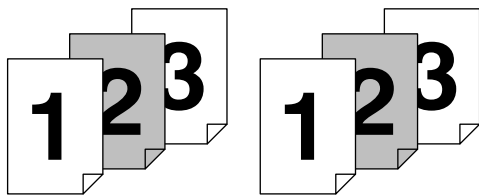
Two drivers, the standard printer driver and a Collator driver, can both be used as Universal drivers for Windows 95, Windows 98 and Windows NT4.0.

Except for the method for printing out multiple sets of copies, the Collator Driver is used in the same way as the standard driver.

[Standard printer driver]



[Collator driver]



■ Refer to "6-1 Printer Driver for Macintosh" on page 6-1 for information on installation on a Macintosh computer.

1. Procedure for Installing and Printing with a Printer Driver

1-2 System Conditions

●Windows 95

		IBM PC / AT or compatible
System requirements	CPU	i486SX 25 MHz or more
	RAM	8 MB or more
	HDD	10 MB or more
Recommended requirements	CPU	Pentium 90 MHz or more
	RAM	16 MB or more
	HDD	10 MB or more
CD-ROM drive		1 drive
Parallel interface port		IEEE 1284

●Windows 98

		IBM PC / AT or compatible
System requirements	CPU	i486DX 66 MHz or more
	RAM	16 MB or more
	HDD	10 MB or more
Recommended requirements	CPU	Pentium 90 MHz or more
	RAM	32 MB or more
	HDD	10 MB or more
CD-ROM drive		1 drive
Parallel interface port		IEEE 1284

●Windows NT 4.0

		IBM PC / AT or compatible
System requirements	CPU	i486SX 25 MHz or more
	RAM	16 MB or more
	HDD	10 MB or more
Recommended requirements	CPU	Pentium 90 MHz or more
	RAM	32 MB or more
	HDD	10 MB or more
CD-ROM drive		1 drive
Parallel interface port		IEEE 1284

●Windows 2000

		IBM PC / AT or compatible
System requirements	CPU	Pentium 133 MHz or more
	RAM	64 MB or more
	HDD	10 MB or more
Recommended requirements	CPU	Pentium 133 MHz or more
	RAM	64 MB or more
	HDD	10 MB or more
CD-ROM drive		1 drive
Parallel interface port		IEEE 1284

1. Procedure for Installing and Printing with a Printer Driver

1-3 Screen that Appears when the CD-ROM is Inserted

This section explains the screen that appears when the CD-ROM supplied with the Printing System (M) is inserted into the CD-ROM drive.



■ Install Drivers

Click to start installation of the printer driver. Follow the instructions displayed on the screen to install the printer driver.

■ Driver Tools

Click to display a menu including uninstallation of the printer driver.

[Remove Drivers] Starts the uninstaller of the printer driver.

[Make Driver Disk] Copies the installer program to a floppy disk. Use of this floppy disk allows you to install the printer driver without the need of the installer CD-ROM.

* Driver for Macintosh cannot be made.

■ Network

Click to display the printmonitor's installation menu. Follow the instructions displayed on the screen to install the print monitor.

■ Documentation

Click to display the manual (PDF) supplied with the printer driver. To open this PDF manual, Adobe Acrobat Reader (developed to view PDF files) is required, so make sure that Adobe Acrobat Reader is installed before opening the manual.

[Install Acrobat Reader] Installs Adobe Acrobat Reader.

[User's manual] Displays the manuals (PDF) of the printer and printer driver. They explain the installation procedure of the printer driver and operation procedure of the printer.

[Release Notes], [Read me] This file contains information which is not explained in the manuals. Please read this file before using the printer driver.

[Programming Manuals] Displays the manuals (PDF) of the PRESCRIBE.

1. Procedure for Installing and Printing with a Printer Driver

1-4 Installing the Printer Driver (Windows)

Install the printer driver as follows:

- * The printer can be connected to the computer by one of the following two methods: local or network. If you want to connect them through network, refer to the operation manual of the operating system (OS).
- * DO NOT use Plug&Play when installing the printer driver. Depending upon the printer you are using, the printer driver may not be installed correctly. ALWAYS use the menu of the CD-ROM that is included with this product to install the printer driver.
- * The screens shown in the following explanation are those displayed when installing the printer driver for Windows 95/98.

1

Start Windows.

- * If any applications are currently running, exit them.

2

Insert the CD-ROM supplied with the printer into the CD-ROM drive.

A start window will appear.

3

Click Install Driver in the lower left corner of the window.

- * If the start window does not appear even if the CD-ROM is inserted, double-click My Computer on the desktop, then double-click the CD-ROM icon.



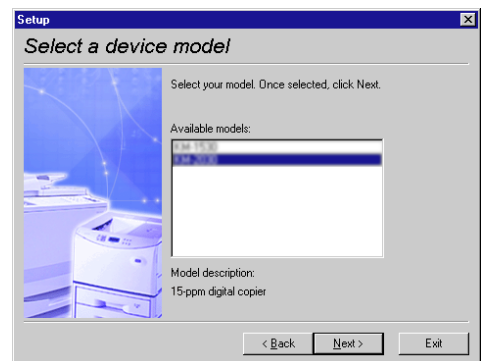
4

The Set-up Wizard window will appear, so click Next.

A list of printer models will appear.

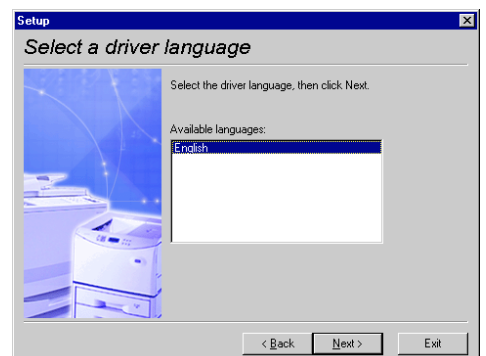
5

Select the printer you are using, then click Next.



6

The language to be used can be selected. Select the desired language from the box, then click Next.



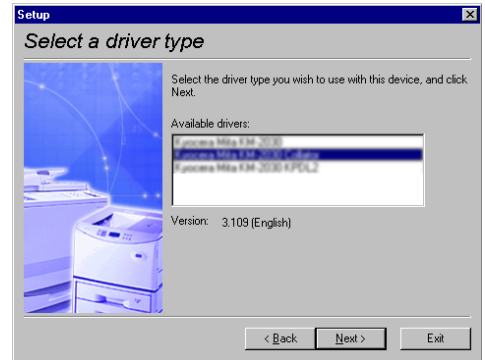
1. Procedure for Installing and Printing with a Printer Driver

7

Select the driver type.

From the list, select the type of driver to be installed, then click Next.

* Refer to "1-1 Included printer Drivers" on page 1-1 for information regarding each printer driver.



8

The End User Licence Agreement will be displayed. Please read all of the contract and, if you agree with the conditions contained therein, click on [Accept]. If you click on [No] the installation procedure will quit.

9

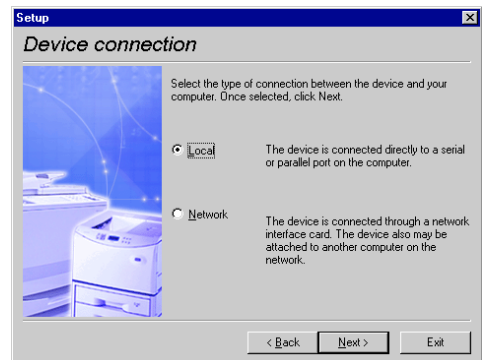
All available options will be displayed. Select the items that you want to install and then click on the [Next] button.

10

Select the connection type: Local or Network.

- Local: The printer is connected directly to the parallel port.
- Network: The printer is connected to the printer via network (using a network interface).

* If Local is selected, proceed to step 12. If Network is selected, proceed to step 11.



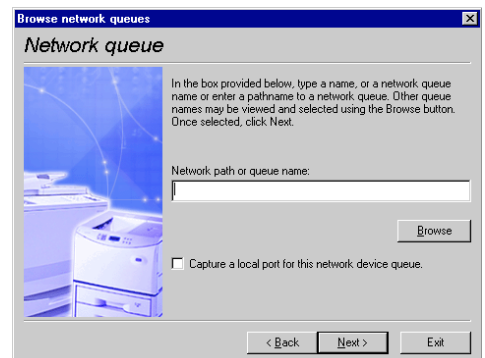
11

Enter the network queue name or the path for the network queue in the box.

To select another network queue name, press Browse.

If you are going to use a local port for the network queue, click the check box displayed below, then proceed to step 12.

Otherwise, proceed to step 13.

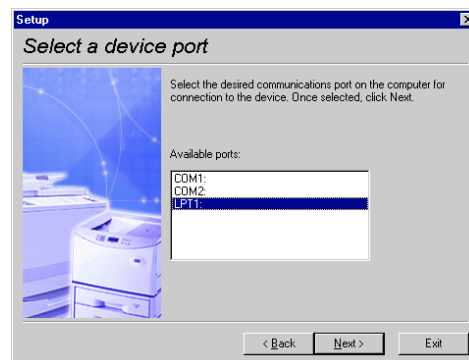


1. Procedure for Installing and Printing with a Printer Driver

12

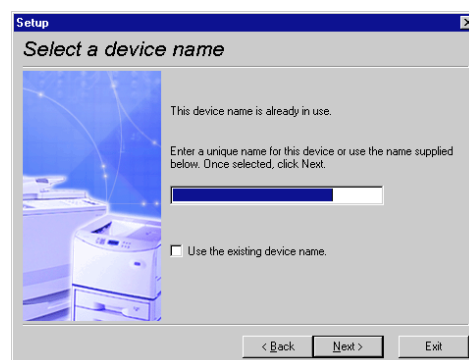
Select a printer port. From the list, select the desired port, then click Next.

- * Normally, set to LPT1.
- * When installing the printer driver for Windows NT, the Add LPR Port button will appear below the box, so press the button to set the desired LPR printer.



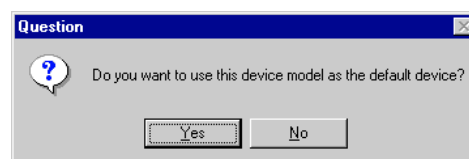
13

A name can be assigned to your printer. Specify a new name or select the desired name from the list, then click Next.



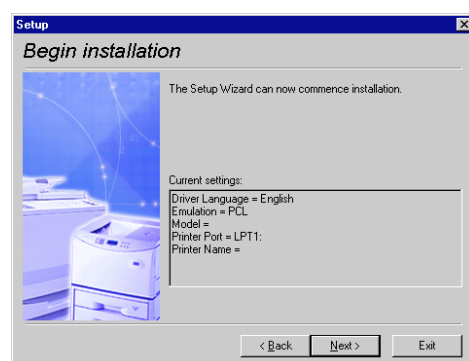
14

Specify whether this printer is to be used as the default printer. Click Yes if so, or click No if not.



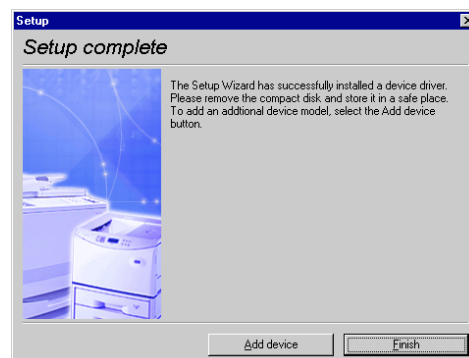
15

The settings you have made so far will appear. If they are correct, click Next. Installation of the printer driver will start.



16

To exit installation, click Finish.
* If you want to add another printer driver, click Add Printer and then repeat the same procedure.
Installation of the printer driver is now complete.



1. Procedure for Installing and Printing with a Printer Driver

1-5 Uninstalling the Printer Driver

The following procedure explains how to uninstall the printer drivers. The uninstall program can be found on the CD-ROM that is included with this product.

1

Start Windows.

2

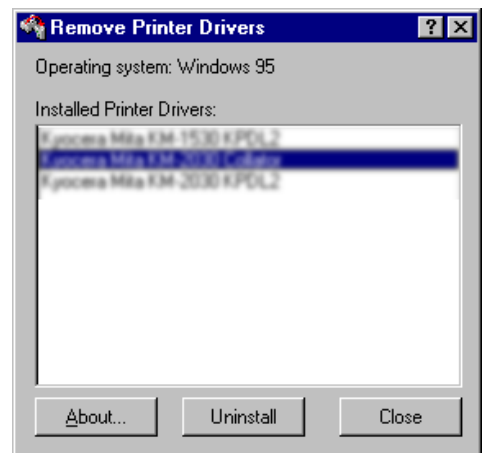
Insert the printer driver installer CD-ROM into the CD-ROM drive on your computer.

The window shown on the right will appear.



3

Click on [Driver Tools] and then on [Remove Drivers] from the subsequent menu. The [Remove Printer Drivers] dialog box will appear. Select the driver that you want to delete and then click on [Uninstall].



4

A message to verify whether or not you really want to delete that driver will appear. If you DO want to delete the selected driver, click on [Yes]. The selected driver will be deleted.

1. Procedure for Installing and Printing with a Printer Driver

1-6 Printing

The following is an example procedure for printing using a printer driver under the conditions and environment noted below.

- OS : Windows 95
- Printer driver : KPDL2 Driver
- Application : Wordpad

If you use a system or driver other than that noted above, use the following procedure simply as a reference tool. It is additionally recommended that you read the section corresponding to your operation system as it will contain further explanations specifically regard that OS and other related drivers.

1

● Making the printer driver settings in Windows

Click on [Start] on the Task Bar.

The Start menu will appear.

2

Use the mouse to point to [Settings] and click on [Printers] in the corresponding submenu.

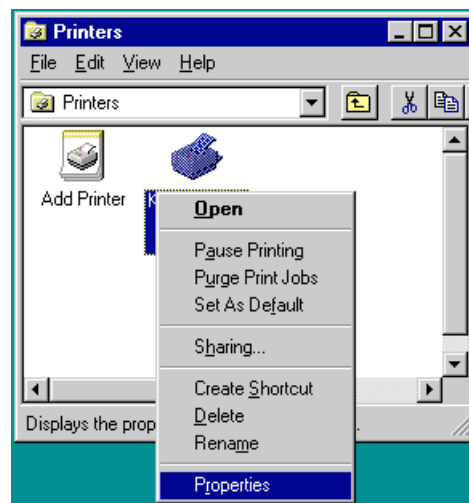
The [Printers] folder will open.

3

Use the right mouse button to click on the icon for this printer. A pop-up menu will be displayed.

Select [Properties] from that menu.

The Properties window will appear.



4

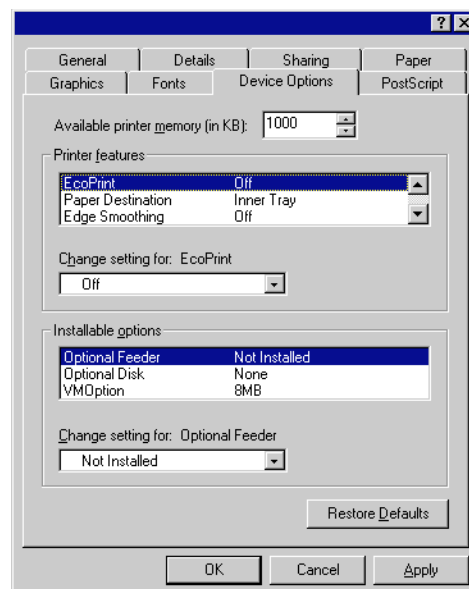
Click on the [Device Options] Tab.

5

“Installable Options” setting

Select and installed options here. Once you have completed the setting for each option, the functions of that option will be available for use.

Once you have completed these settings, click on [OK].



1. Procedure for Installing and Printing with a Printer Driver

6

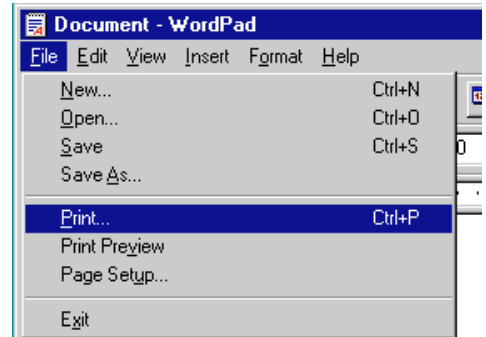
● Printing from the application

Use the application that you want to use to open the document that you want to print.

7

Select [Print] in the [File] menu.

The [Print] dialogue box will appear.



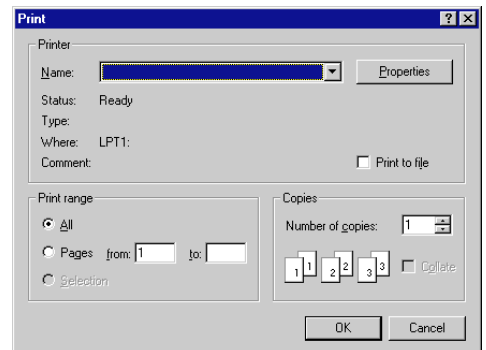
8

Select the desired number of copies that you want to make and which pages are to be printed.

Select this printer in the [Name] field.

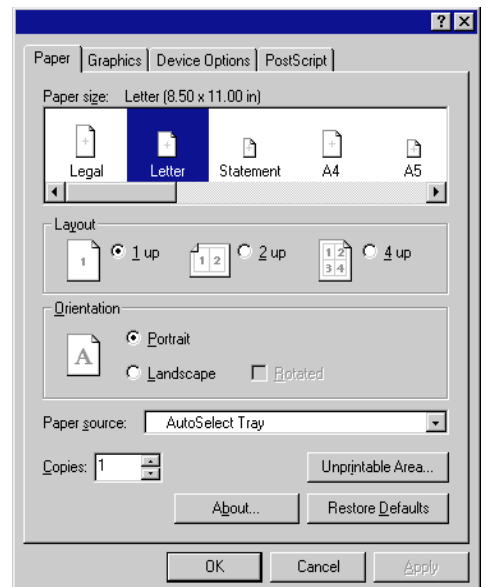
Click on [Properties].

The Properties window will appear.



9

Click on the [Paper] Tab and select the desired paper size, cassette, etc.



10

Click on the [Device Options] Tab and select the desired function(s).

11

Click on [OK]. You will be returned to the [Print] dialogue box. Click on [OK] once again. Printing will begin.

2. Windows XL Driver

The following section explains the functions of the XL driver.

- * The following procedure is explained as though it is being carried out in Windows 2000. If you are using another operating system, use this procedure simply as reference.
- * Depending upon version upgrades of the printer driver, the screenshots shown here may differ somewhat from that of the actual printer driver.
- * Refer to the Instruction Manual for Windows regarding items that are not explained in this Instruction Handbook.

2-1 Making printing and property settings

1

Start up Windows.

2

Click on [Start] in the Task Bar.
The [Start] menu will be displayed.

3

Use the mouse to point to [Settings] and click on [Printers] in the submenu that is displayed. The [Printers] folder will open.

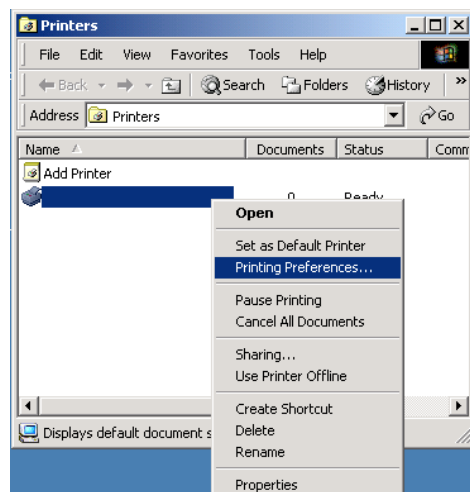
4

Use the right mouse button to click on the icon for this printer. A pop-up menu will be displayed.

Select [Printing Preferences] from the menu.

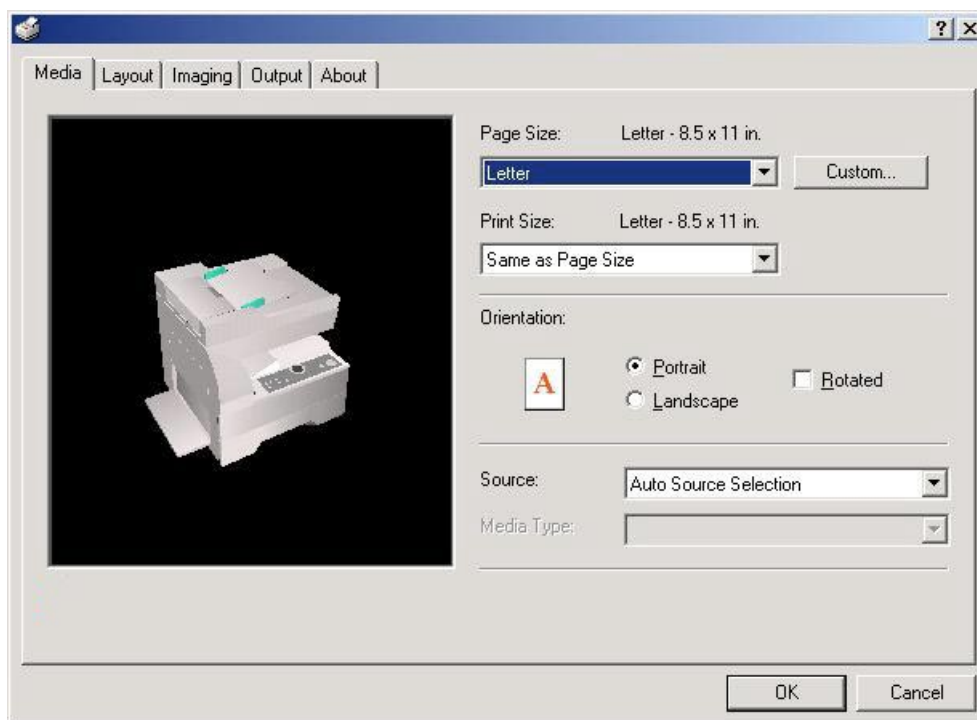
The Printing Preferences window will open.

- * When you are making settings for optional equipment, select [Properties] here and then click on the [Device Settings] Tab.



2. Windows XL Driver

2-2 Media Tab



■ Paper Size:

Allows you to select a standard size of paper or an envelope size.
The following sizes of paper or envelope can be used with this printer.

Standard-size paper sheet	Letter (8-1/2" x 11"), Legal (8-1/2" x 14"), Statement (5-1/2" x 8-1/2"), A4, A5, A6, JIS B5, JIS B6 and Folio
Envelope	COM-10, Monarch, DL and C5

■ Custom...

Click on this button when you want to print onto a non-standard size of paper. The "Custom Media Size" dialog box will appear. Refer to "2-2-1 Custom Media Size" on page 2-3 for more detailed information.

■ Print Size:

Allows you to select the size of the printed image. The image size will be enlarged or reduced according to difference in the setting made here and in the "Page Size" field.

■ Orientation:

Sets the orientation of printing.

[Portrait] The image will be printed vertically.

[Landscape] The image will be printed horizontally.

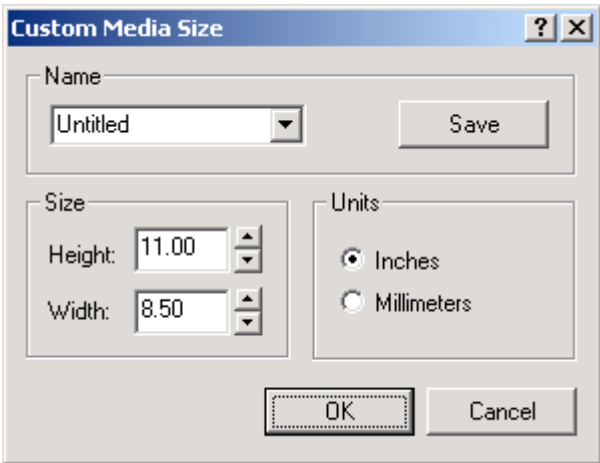
[Rotated] Select this checkbox by clicking on it and putting a check mark in the box in order to have the image printed upside-down.

■ Source:

Select the desired location of paper feed from the dropdown list. The factory default setting is "Auto Source Selection".

2. Windows XL Driver

2-2-1 Custom Media Size dialog box



■ **Setting a custom paper size**

Perform the following procedure in order to register a custom size when you want to print onto a non-standard size of paper. The information registered here will be displayed under the “Page Size” setting in the Media Tab as well as in the Paper Size setting of your application.

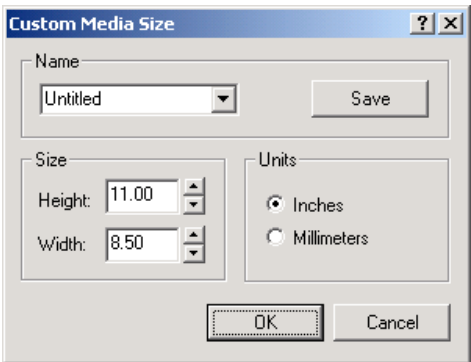
1 Select the desired unit of measurement in the “Units” block and the desired dimensions of the paper in the “Size” block.

<Available settings>

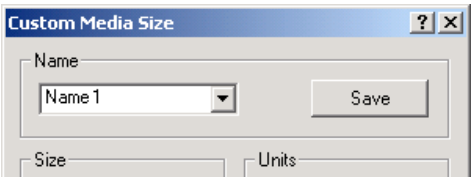
Units: “Inches” or “Millimeters”

Height: 5.83 - 14.00 [Inches]
 148.1 - 355.6 [Millimeters]

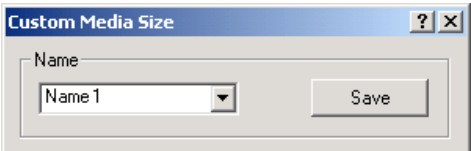
Width: 3.88 - 8.50 [Inches]
 98.4 - 215.9 [Millimeters]



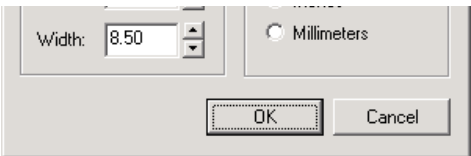
2 Type into the “Name” field the name you want to use for this custom size of paper.
* It is the name that you register here that will actually be displayed under the “Page Size” setting.



3 Click on the “Save” button.
* The “Save” button will change to the “Delete” button when you are deleting a media size that is already registered, and to the “Rename” button when you are changing the name of a registered media size.

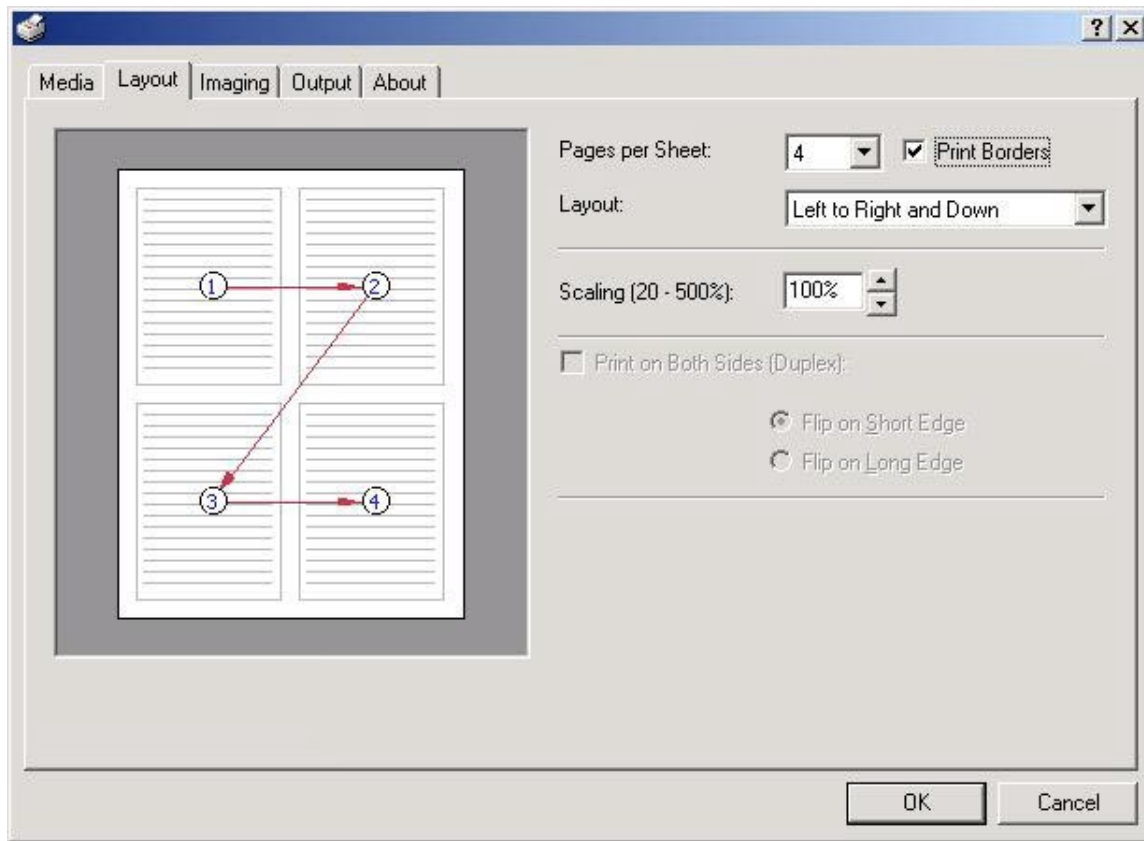


4 Click on the “OK” button.



2. Windows XL Driver

2-3 Layout Tab

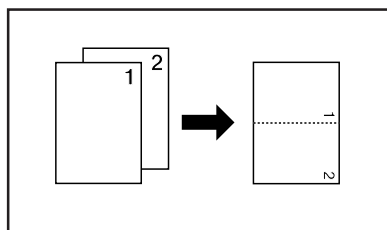


■ Pages per Sheet:

Allows you to print reduced images of multiple (1, 2, 4, 6, 9, 16 or 25) pages onto a single sheet of paper. This function is called "N-Up" printing (where "N" equals the number of image pages). Reduction of the images is calculated automatically so that all of the selected pages fit onto the single sheet of paper. The factory default setting is "1" (one page to each sheet of paper).

Example: With 2-Up printing

Prints reduced images of 2 full pages onto a single sheet of paper.



■ Print Borders

Prints border lines between the different images when the "Pages per Sheet" function is selected.

■ Layout

Specifies the order of display of the images when the "Pages per Sheet" function is selected.

■ Scaling

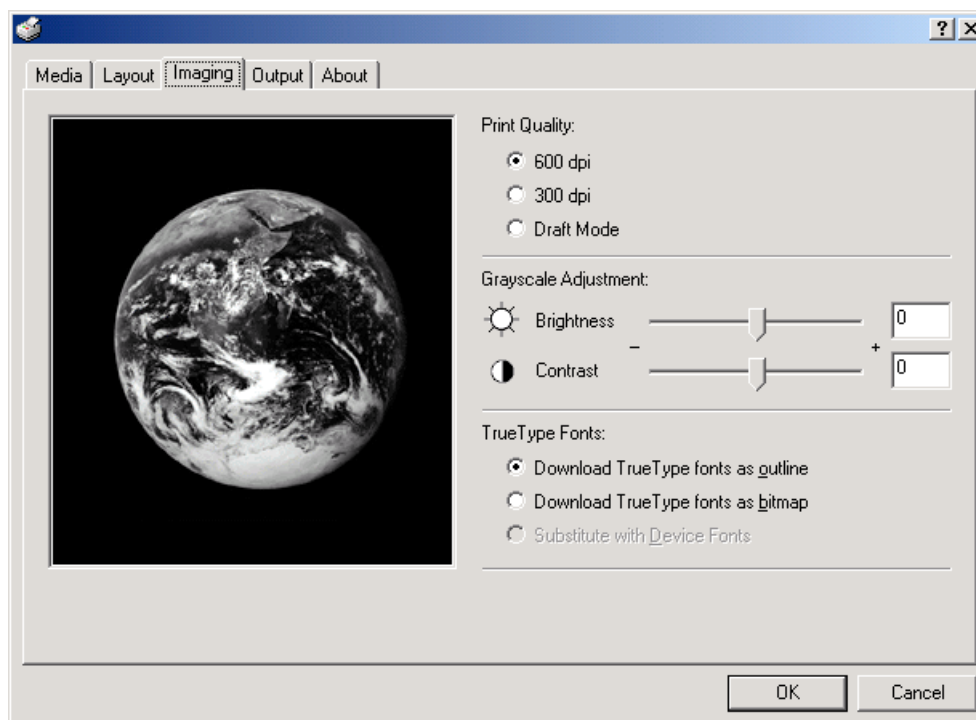
Allows enlargement or reduction of the image size.

Note

The image size will normally be enlarged or reduced according to the difference in the setting made in the "Page Size" and "Print Size" fields. If you then change the setting here, the actual magnification will be based on the original settings and the image may be even further enlarged or reduced.

2. Windows XL Driver

2-4 Imaging Tab



■ Print Quality:

Specifies the printing resolution (number of dots per inch) to be used when printing. Select between “600 dpi [High]”, “300 dpi [Low]” and “Draft Mode”. If you select the “Draft Mode” option, printing will be accomplished printing in a toner-saving mode. This mode is especially suited for test pages, etc., where high printing quality is not required.

■ Grayscale Adjustment

Adjusts the brightness and contrast of the printed image. The factory default for both settings is “0”.

[Brightness] Adjusts the brightness of the image. When you want to print the image brighter than the actual original, drag the slider towards the plus “+” sign, or type in a positive number directly into the field at the right of the slider bar. Conversely, when you want to print the image darker than the actual original, drag the slider towards the minus “-” sign, or type in a negative number directly into that field.

[Contrast] Adjusts the contrast of the image. When you want to print at a sharper image contrast, drag the slider towards the plus “+” sign, or type in the desired value (a positive number) directly into the field at the right of the slider bar. Conversely, when you want to print at a softer image contrast, drag the slider towards the minus “-” sign, or type in a negative number directly into that field.

■ TrueType Fonts

Selects the method of printing with fonts. The factory default setting is “Download TrueType fonts as outline”.

[Download TrueType fonts as outline]

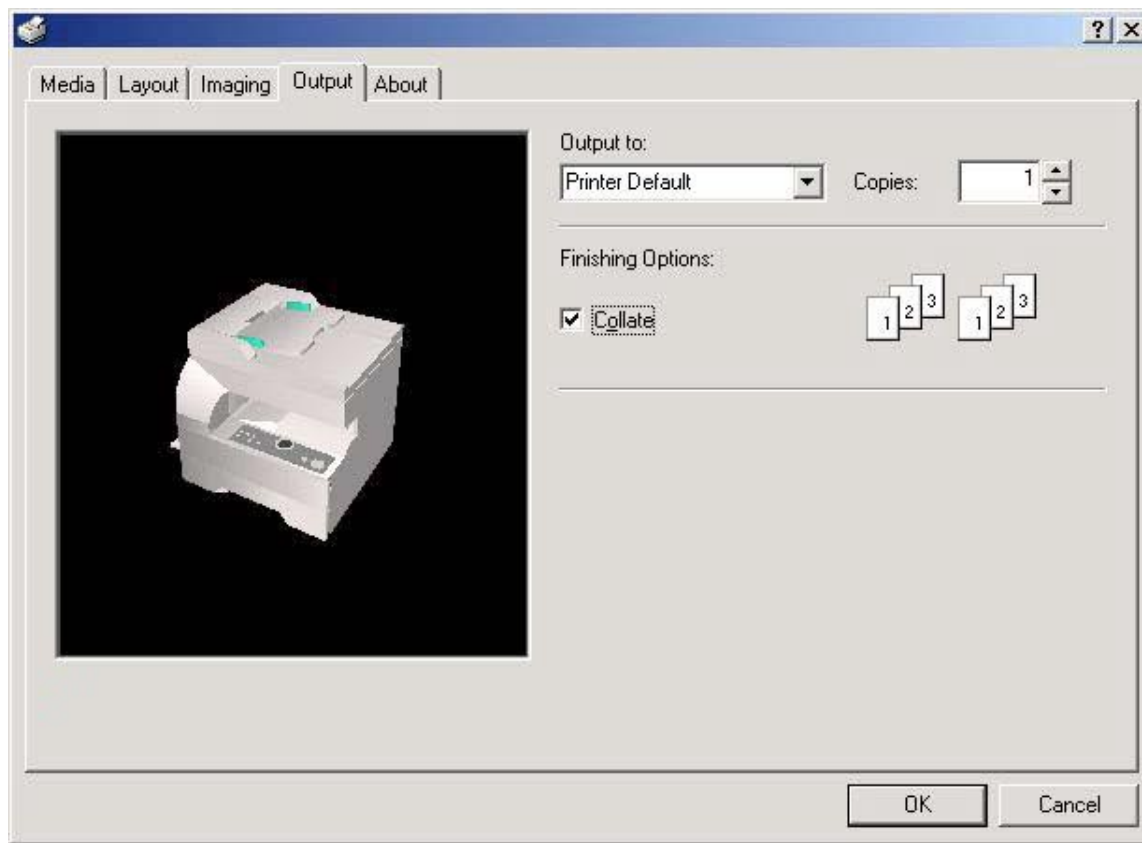
..... TrueType fonts will be downloaded to the printer as outline fonts for printing.

[Download TrueType fonts as bitmap]

..... TrueType fonts will be downloaded to the printer as bitmap fonts for printing.

2. Windows XL Driver

2-5 Output Tab



■ Copies

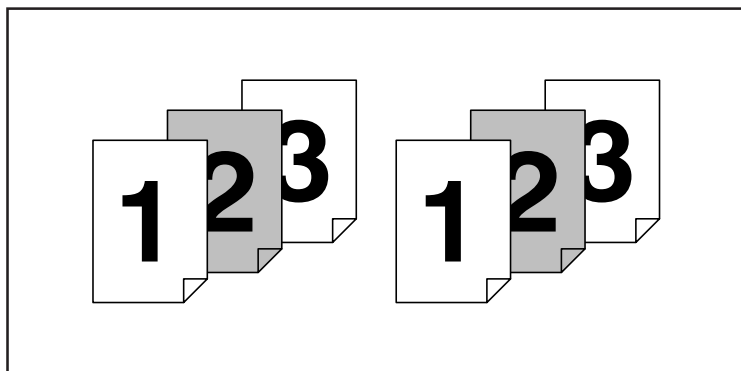
Specifies the number of prints to be made. Select between 1 and 999 copies by clicking on the arrows at the right of the field or by typing the desired number directly into the field. The factory default setting is "1".

■ Collate

When you are printing more than one copy of one or more pages, it is possible to sort the printed copy sets.

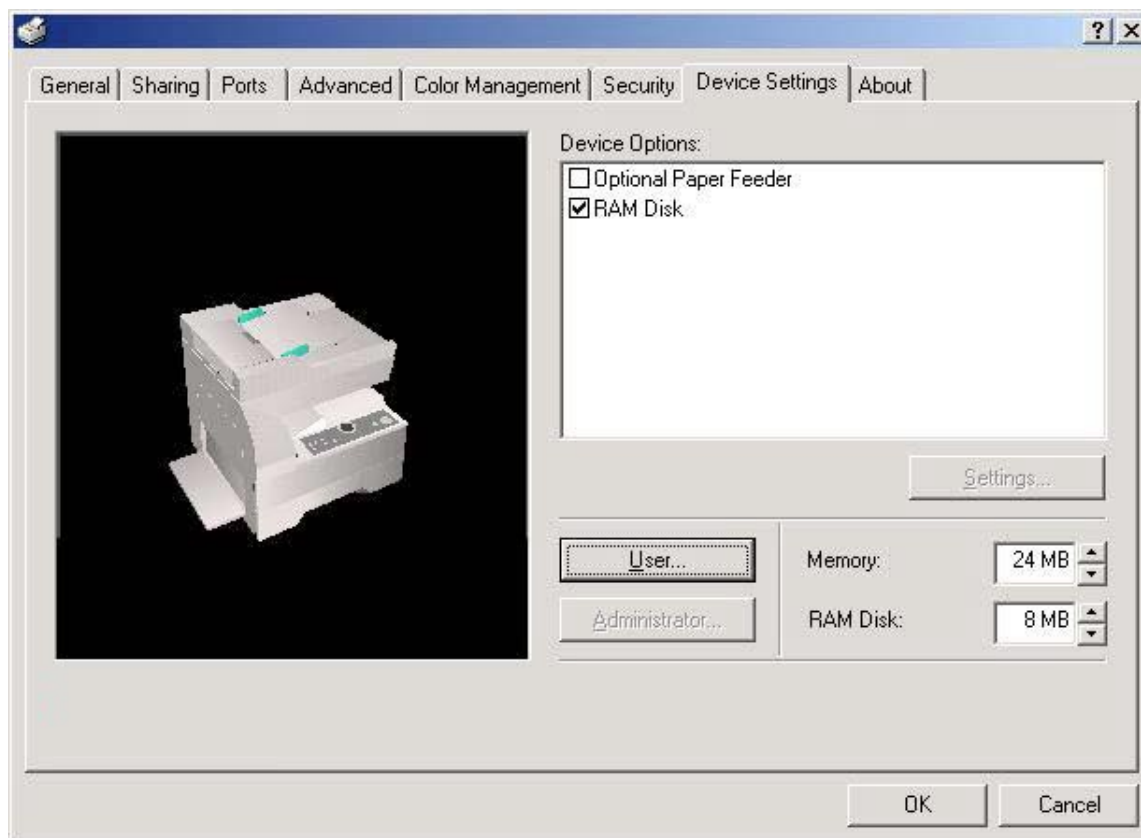
*It is necessary to create a RAM disk. (Refer to "RAM disk" on page 2-7)

Example: If the "Collate" option is selected, it is possible to print out 2 sets of the same copies.



2. Windows XL Driver

2-6 Device Settings Tab



To access the Device Settings screen, in step 4 on page 2-1 select [Properties] from the menu and then click on the Device Settings Tab. When you have added optional equipment, make the appropriate settings for that equipment here. Once the corresponding setting is complete, the corresponding function of the installed option will be added to the printer.

■ Device Options

Select and installed options here. Once you have completed the setting for each option, the functions of that option will be available for use.

● Optional Paper Feeder

Perform this setting according to the installed Option Cassette.

● RAM Disk

Perform this setting when you want to create a RAM disk. Refer to “Chapter 1, 2-2 RAM Disk” on page 2-1 for more detailed information on creating a RAM disk.

* In order to create a RAM disk, it is necessary to increase the memory capacity of your printer. After increasing memory, perform the setting here according to the “Memory” setting below.

■ Memory

Specifies the amount of memory installed in the printer. If you make a mistake in the setting here, it is possible that printing will not be accomplished properly.

■ RAM Disk

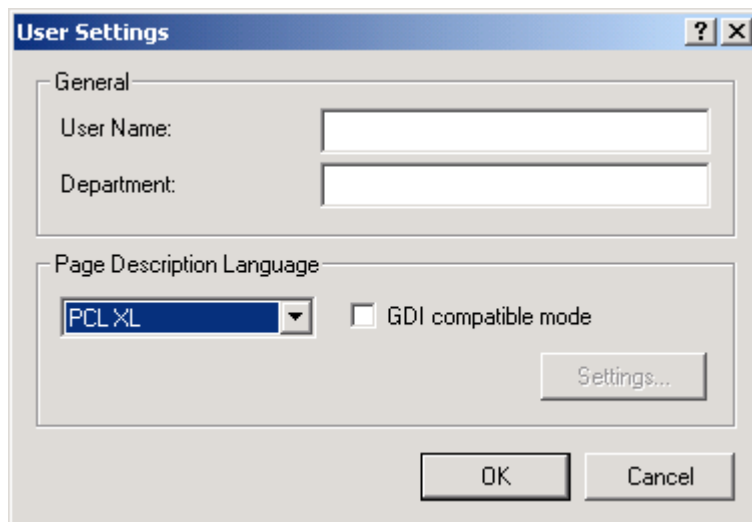
Specifies the amount of memory to be used for the RAM disk. This setting will only be available when you have selected “RAM Disk” in the “Device Options” list.

■ User...

Click on this button when you want to register a user and/or department name. The [User Settings] dialog box will appear. It is also possible to select the “GDI compatible mode” from that dialog box. Refer to “2-6-1 User Settings” on page 2-8 for more detailed information.

2. Windows XL Driver

2-6-1 User Settings

The image shows a 'User Settings' dialog box with a blue title bar and standard Windows window controls. It is divided into two sections. The 'General' section contains two text input fields labeled 'User Name:' and 'Department:'. The 'Page Description Language' section features a dropdown menu currently set to 'PCL XL' and an unchecked checkbox labeled 'GDI compatible mode'. A 'Settings...' button is located to the right of the checkbox. At the bottom of the dialog are 'OK' and 'Cancel' buttons.

- **General**
Register the desired user and/or department name.
- **Page Description Language**
The emulation modes that can be used with this product will be displayed in the dropdown list. If multiple modes are displayed, it is possible to select the desired mode.
- **GDI compatible mode**
Select this mode in order to accomplish printing that is more accurate to the data shown on your monitor. Select this mode if text corruption, etc., does happen to occur or if the image is in any other way not printed correctly.

3. Printer Driver for Windows 95/98

The following procedure explains the functions of the Universal driver and the KPDL2 driver for those who use Windows 95 or Windows 98 as their operating system.

- * Depending upon version upgrades of the printer driver, the screenshots shown here may differ somewhat from that of the actual printer driver.
- * Refer to the Instruction Manual for Windows or to On-Line Help for information regarding items that are not explained in this Instruction Handbook.
- * Two printer drivers have been included with this product: a standard printer driver and a Collator-compatible driver. Refer to "1. Procedure for Installing and Printing with a Printer Driver" on page 1-1 for more detailed information.
- * If you use the KPDL2 driver, be sure to set the emulation mode in the printer to "KPDL" or "KPDL(AUTO)".

3-1 Opening the Properties Window

1

Start Windows 95 or Windows 98.

2

Click on [Start] on the task bar.

The Start menu will appear.

3

Use the mouse to point to [Settings]. A submenu will appear, so click on [Printers].

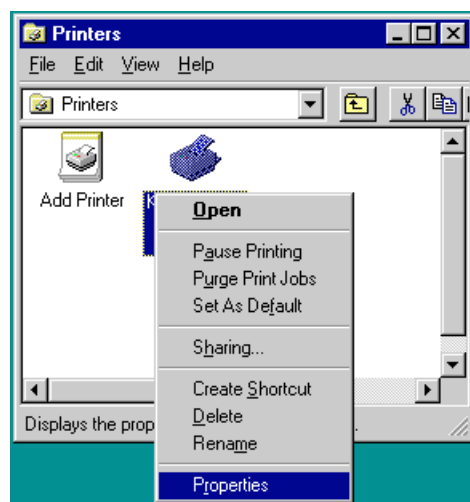
The [Printers] folder will open.

4

Use the right mouse button to click on the icon for this printer. A pop-up menu will be displayed.

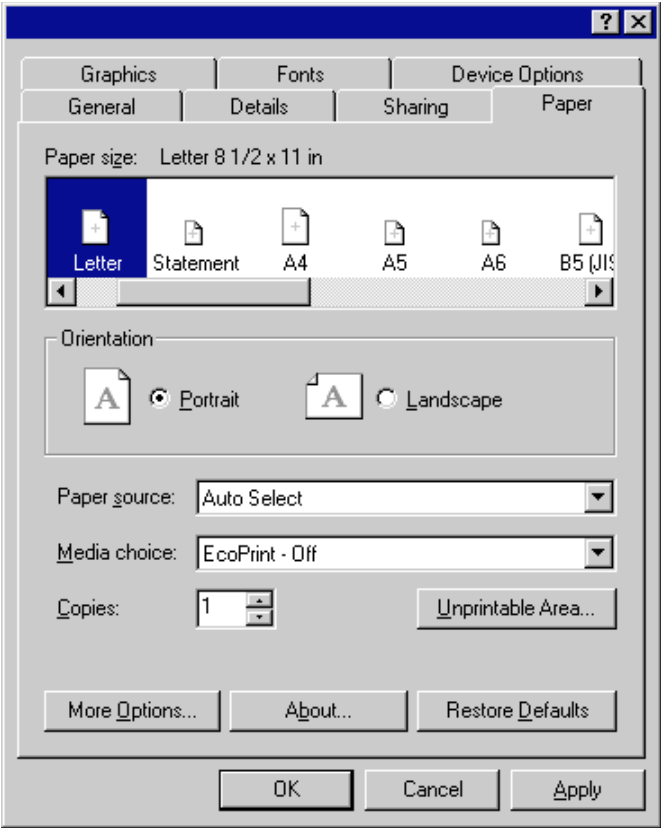
Select [Properties] from the menu.

The Properties window will appear.



3. Printer Driver for Windows 95/98

3-2 Paper Tab (Universal Driver)

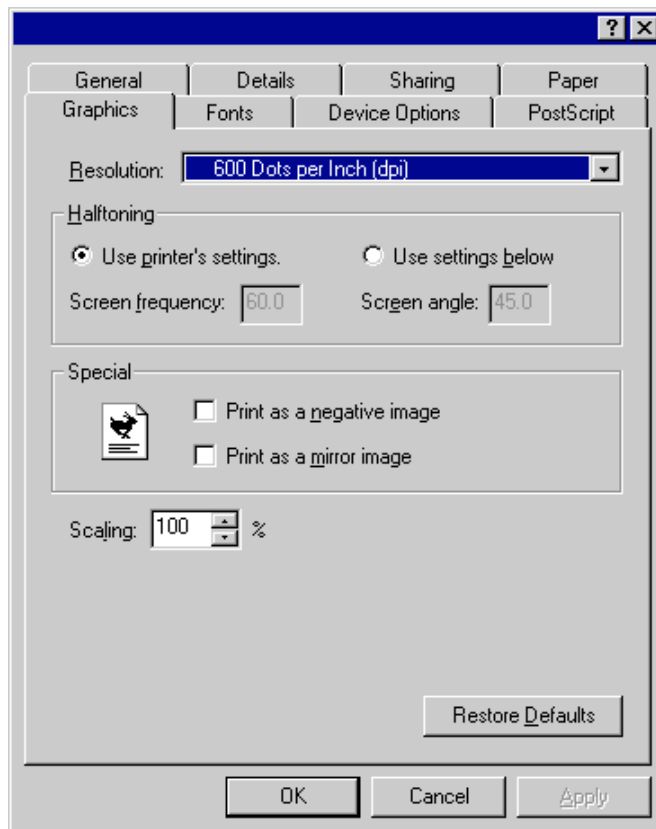


- **Paper size:**
Select the size of standard-size paper sheet or envelope.
The following standard-size paper sheets and envelopes can be used with this printer:

Standard-size paper sheet	Letter (8 1/2" x 11"), Legal (8 1/2" x 14"), Statement (5 1/2" x 8 1/2"), A4, A5, A6, Folio (210 x 330 mm), JIS B5, JIS B6
Envelope	COM-10, Monarch, DL, C5
- **Orientation:**
Select the print orientation from the following:
 [Portrait] Prints lengthwise.
 [Landscape] Prints widthwise.
- **Paper source:**
Displays a list of trays installed in your printer. Select the desired tray from the list. The factory default setting is "Auto Select".
- **Media choice(EcoPrint)**
Saves on toner. The factory default setting is "Off".
- **Unprintable Area...**
Click this button in order to open the Unprintable Area dialog box and set the area that should not be printed onto.

3. Printer Driver for Windows 95/98

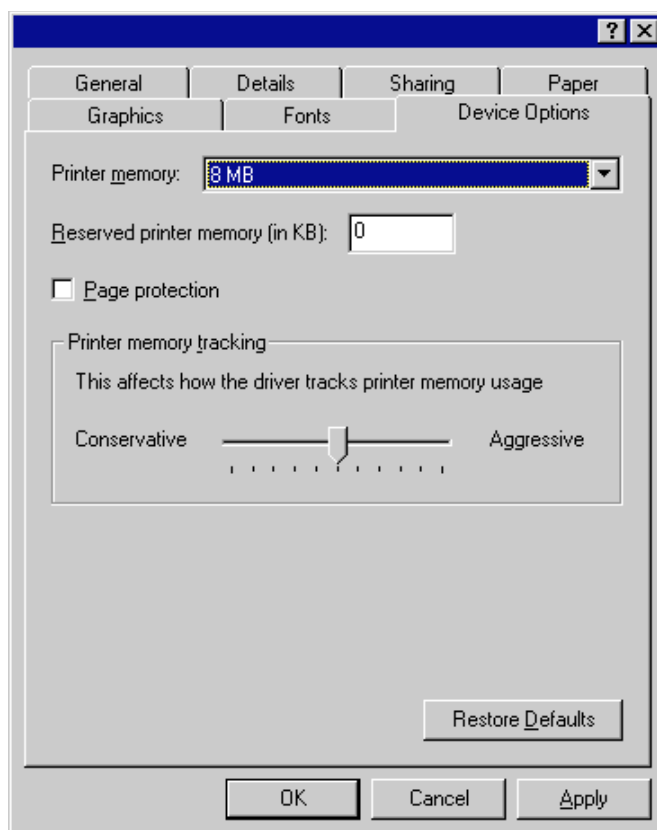
3-3 Graphics Tab (Universal Driver)



- **Resolution:**
Specify the desired print resolution. The resolution must be specified in the number of dots per inch (dpi). Select between “600 x 600 dots per inch” and “300 x 300 dots per inch”. The factory default setting is “600 dots per inch”.
- **Dithering**
Specifies the method of Dithering. Refer to On-Line Help for more detailed information.
- **Intensity**
Allows you to adjust the printing contrast. Drag the slider towards “Darkest” or “Lightest”, as appropriate.
- **Graphics mode**
Selects the method of data transmission when printing detailed objects. Generally, if you select “Use vector graphics” printing speed will be increased. However, if you experience trouble (the positioning of objects is not correct, etc.) select “Use raster graphics”.

3. Printer Driver for Windows 95/98

3-4 Device Option Tab (Universal Driver)

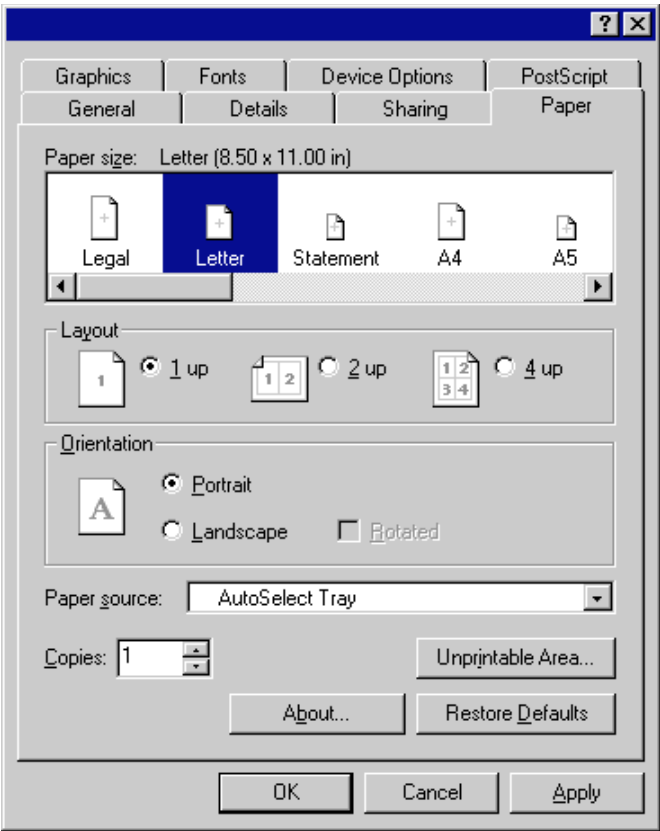


■ **Printer memory:**

Perform this setting according to the amount of memory in your printer. If a mistake is made in this setting, there is a possibility that printing will not be accomplished properly.

3. Printer Driver for Windows 95/98

3-5 Paper Tab (KPDL2 Driver)



■ **Paper Size:**

Select the size of standard-size paper sheet or envelope.
The following standard-size paper sheets and envelopes can be used with this printer:

Standard-size paper sheet	Letter (8 1/2" x 11"), Legal (8 1/2" x 14"), Statement (5 1/2" x 8 1/2"), A4, A5, A6, Folio (210 x 330 mm), JIS B5, JIS B6
Envelope	COM-10, Monarch, DL, C5

■ **Layout:**

The Layout options enable you to print out the reduced images of either 2 or 4 full pages onto a single sheet of paper.

■ **Orientation:**

Select the print orientation from the following:
[Portrait] Prints lengthwise.
[Landscape] Prints widthwise.
[Rotated] Prints the image upside-down when "Landscape" is selected.

■ **Paper source:**

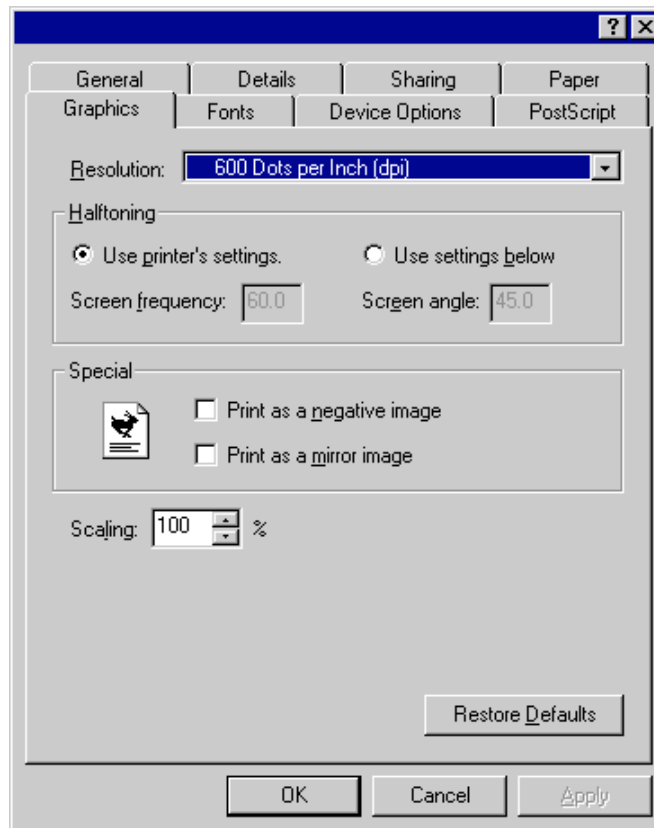
Displays a list of trays installed in your printer. Select the desired tray from the list. The factory default setting is "AutoSelect Tray".
* It is necessary to perform the settings under "Page Policy" on page 3-7 BEFORE making settings here. If you want to select the source of paper feed according to the tray, make sure that "Cassette Base" is selected there. If you select "AutoSelect Tray" here, be sure that the "Page Policy" setting is set to "Auto Size Select" or there is a possibility that printing will be accomplished onto paper that is difference the expected.

■ **Unprintable Area...**

Click this button in order to open the Unprintable Area dialog box and set the area that should not be printed onto.

3. Printer Driver for Windows 95/98

3-6 Graphics Tab (KPD2 Driver)

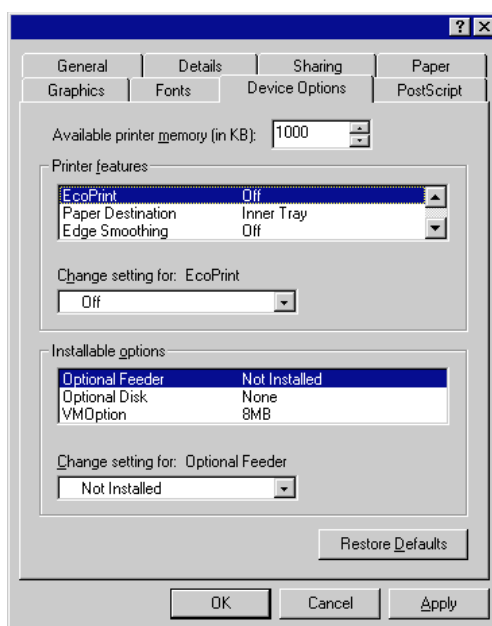


- **Resolution:**
Specify the desired print resolution. The resolution must be specified in the number of dots per inch (dpi). Select between “600 x 600 dots per inch (dpi)” and “300 x 300 dots per inch (dpi)”. The factory default setting is “600 dots per inch (dpi)”.
- **Halftoning:**
Specifies values for the number of line per inch “frequency” and angle of the pattern that you want to use for halftone screens. If you are getting a more pattern when you print graphics such as photographs or detailed images, you may want to adjust these settings. However, the default printer settings should work in most cases.

* Do not change these settings unless you have experience using halftones. To return to the default settings after you have made changes, click Use printer's settings.
- **Special:**
 - [Print as a negative image] Prints a negative of the image by complementing the RGB values or reversing the black and white values. Click this option to see an example.
 - [Print as a mirror image] Prints a mirror image of the your document by reversing the horizontal coordinates. Click this option to see an example.
- **Scaling:**
Allows enlargement or reduction of the image size.

3. Printer Driver for Windows 95/98

3-7 Device Options Tab (KPD2 Driver)



■ Available printer memory (in KB)

Indicates the amount of memory available for printing. As this is determined according to the amount of memory entered as the "VM Option" setting under "Installable Options", there is normally no need to change it.

■ Print features

It is possible to change the settings related to various printer functions. Select the desired function here and then change the setting in the field under "Change setting for: xxxx". Functions available for selection are as follows:

● EcoPrint

Saves on toner. The factory default setting is "Off".

● Edge Smoothing

Turning this setting "On" allows the jaggies that appear around the edge of text and graphics to be evened out through the smoothing process.

● Page Policy

Perform this setting in conjunction with the settings to be made under "Paper source" on page 3-5.

[Auto Size Select] Select this setting when you want to select "AutoSelect Tray" under "Paper source".

[Cassette Base] Select this setting when you want to select the source of paper feed according to the tray under "Paper source".

* If you are going to select "AutoSelect Tray" under "Paper source", be sure to select "Auto Size Select" here or there is a possibility that printing will be accomplished onto paper that is different than expected.

● Job Spooling

When you want to print out more than one set of the same documents, it is possible to have them sorted and ejected one set at a time.

[None] Does not sort.

[Temporary] Sorts and prints in order of sets: Set 1, Set 2, Set 3, etc.

* It is necessary to create a RAM disk. (Refer to "● Optional Disk" below.)

■ Installable options

Perform the settings here whenever you add optional equipment. The functions of the optional equipment will only be available to the printer after you have completed the setting here. Select the desired optional equipment here and then change the setting in the field under "Change setting for: xxxx". The optional equipment available for selection are as follows:

● Optional Feeder

Perform this setting according to the installed Option Cassette.

● Optional Disk

Perform this setting when you want to create a RAM disk. Refer to "Chapter 1, 2-2 RAM Disk" on page 2-1 for more detailed information on creating a RAM disk.

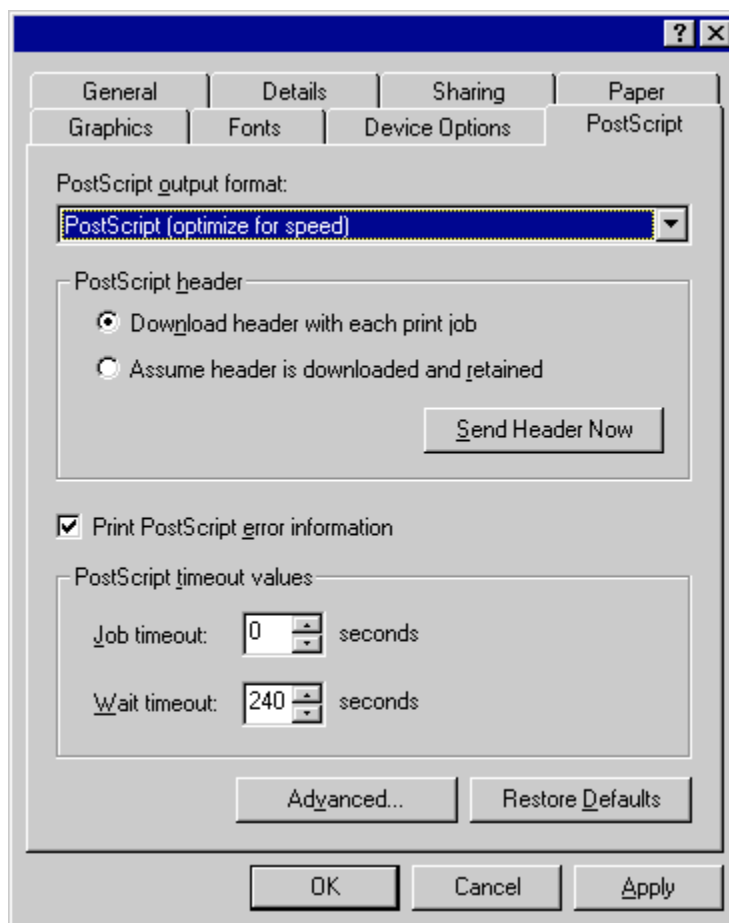
* In order to create a RAM disk, it is necessary to increase the memory capacity of your printer. After increasing memory, perform the setting here according to the "VM Option" setting below.

● VM Option

Perform this setting according to the amount of memory in your printer. If a mistake is made in this setting, there is a possibility that printing will not be accomplished properly.

3. Printer Driver for Windows 95/98

3-8 PostScript Tab (KPD2 Driver)



Allows you to make PostScript-related settings. Refer to On-Line Help for more detailed information.

4. Printer Driver for WindowsNT

The following procedure explains the functions of the Universal driver and the KPDL2 driver for those who use Windows NT4.0 as their operating system.

- * Depending upon version upgrades of the printer driver, the screenshots shown here may differ somewhat from that of the actual printer driver.
- * Refer to the Instruction Manual for Windows or to On-Line Help for information regarding items that are not explained in this Instruction Handbook.
- * Two printer drivers have been included with this product: a standard printer driver and a Collator-compatible driver. Refer to "1. Procedure for Installing and Printing with a Printer Driver" on page 1-1 for more detailed information.
- * If you use the KPDL 2 driver, be sure to set the emulation mode in the printer to "KPDL" or "KPDL(AUTO)".

4-1 Opening the Properties Window

1

Start WindowsNT.

2

Click on [Start] on the task bar.

The Start menu will appear.

3

Use the mouse to point to [Settings]. A submenu will appear, so click on [Printers].

The [Printers] folder will open.

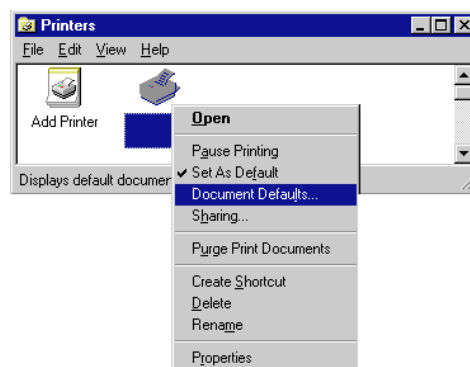
4

Use the right mouse button to click on the icon for this printer. A pop-up menu will be displayed.

Select [Document Defaults] from the menu.

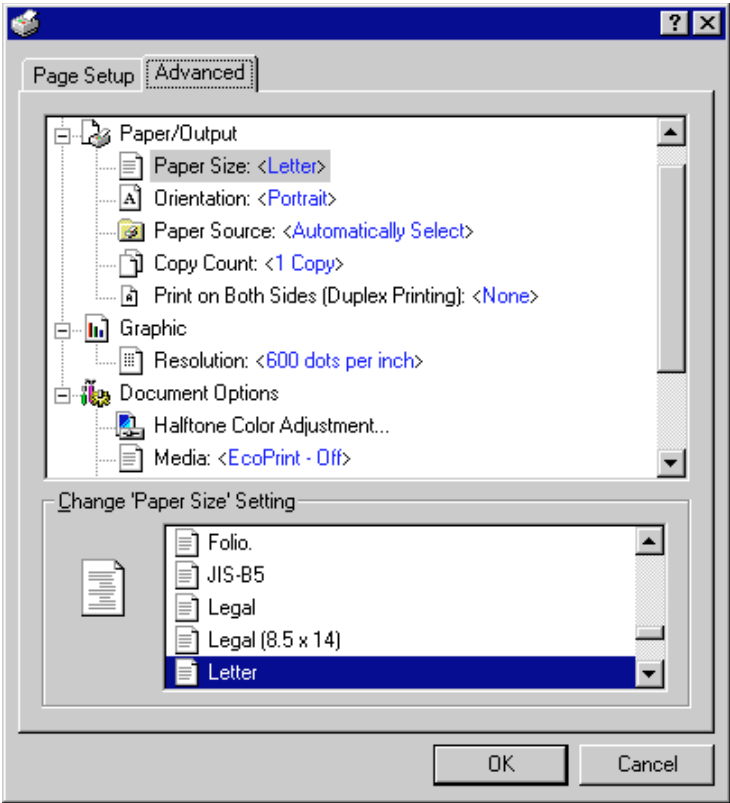
The Document Defaults window will open.

* When you are making settings for optional equipment, select [Properties] here and then click on the [Device Settings] Tab.



4. Printer Driver for WindowsNT

4-2 Paper/Output (Universal Driver)



- **Paper Size:**
Select the size of standard-size paper sheet or envelope. Selection can be made in the “Change ‘Paper Size’ Setting” area. The following standard-size paper sheets and envelopes can be used with this printer:

Standard-size paper sheet	Letter (8 1/2" x 11"), Legal (8 1/2" x 14"), Statement (5 1/2" x 8 1/2"), A4, A5, A6, Folio (210 x 330 mm), JIS B5, JIS B6
Envelope	COM-10, Monarch, DL, C5

- **Orientation:**
Select the print orientation from the following: Selection can be made in the “Change ‘Orientation’ Setting” area. The factory default setting is “Portrait”.

[Portrait] Prints lengthwise.
[Landscape] Prints widthwise.

- **Paper Source:**
Select the desired tray in the “Change ‘Paper Source’ Setting” area. The factory default setting is “Automatically Select”.

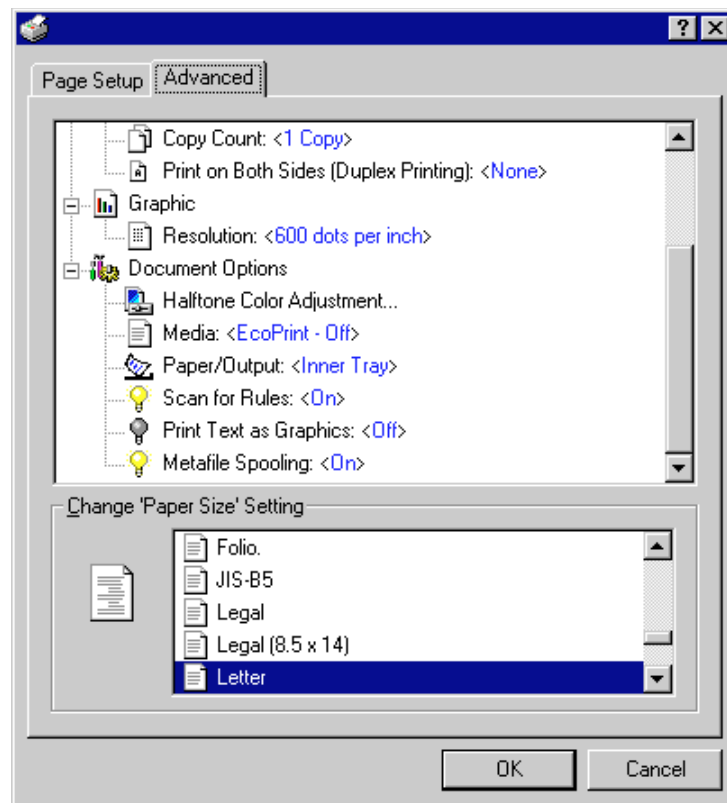
- **Copy Count:**
Set the number of copies to be made. The allowable range is from 1 to 999. Setting can be made in the “Change ‘Copy Count’ Setting” area. Click the arrow buttons (▲,▼) or enter directly from the keyboard. The factory default setting is “1”.

4-3 Graphic (Universal Driver)

- **Resolution:**
Specify the desired print resolution. The resolution must be specified in the number of dots per inch (dpi). Select between “600 x 600 dots per inch” and “300 x 300 dots per inch”. The factory default setting is “600 dots per inch”.

4. Printer Driver for WindowsNT

4-4 Document Options (Universal Driver)

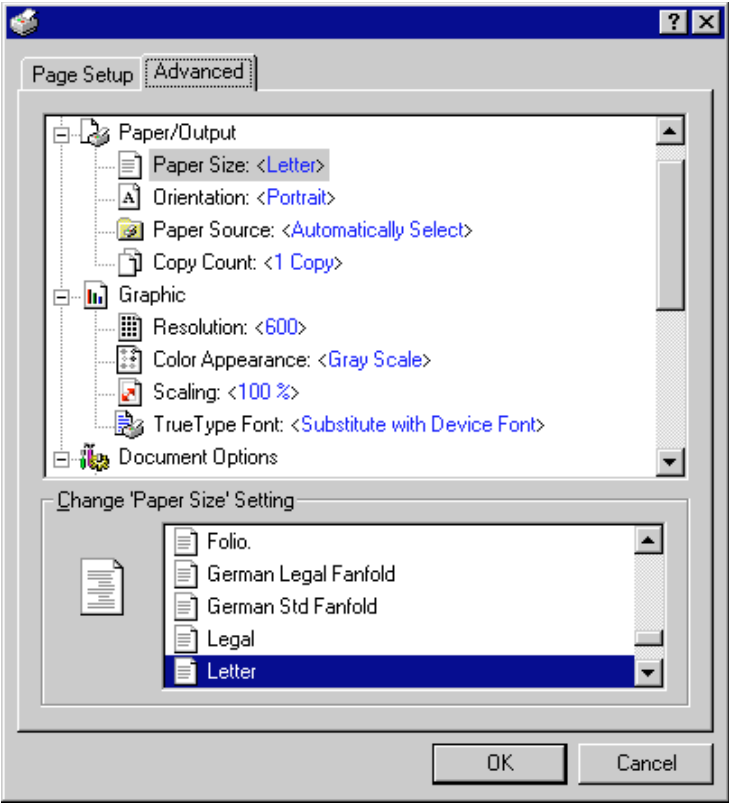


■ Media:

Saves on toner. Setting can be made in the "Change 'Media' Setting" area. The factory default setting is "Eco Print-Off".

4. Printer Driver for WindowsNT

4-5 Paper/Output (KPD2 Driver)



- **Paper Size:**
Select the size of standard-size paper sheet or envelope. Selection can be made in the “Change ‘Paper Size’ Setting” area. The following standard-size paper sheets and envelopes can be used with this printer:

Standard-size paper sheet	Letter (8 1/2" x 11"), Legal (8 1/2" x 14"), Statement (5 1/2" x 8 1/2"), A4, A5, A6, Folio (210 x 330 mm), JIS B5, JIS B6
Envelope	COM-10, Monarch, DL, C5

- **Orientation:**
Select the print orientation from the following: Selection can be made in the “Change ‘Orientation’ Setting” area. The factory default setting is “Portrait”.

[Portrait] Prints lengthwise.
[Landscape] Prints widthwise.

- **Paper Source:**
Select the desired tray in the “Change ‘Paper Source’ Setting” area. The factory default setting is “Automatically Select”.
* It is necessary to perform the settings under “Page Policy” on page 4-6 BEFORE making settings here. If you want to select the source of paper feed according to the tray, make sure that “Cassette Base” is selected there.
If you select “Automatically Select” here, be sure that the “Page Policy” setting is set to “Auto Size Select” or there is a possibility that printing will be accomplished onto paper that is difference the expected.

- **Copy Count:**
Set the number of copies to be made. The allowable range is from 1 to 999. Setting can be made in the “Change ‘Copy Count’ Setting” area. Click the arrow buttons (▲,▼) or enter directly from the keyboard. The factory default setting is “1”.

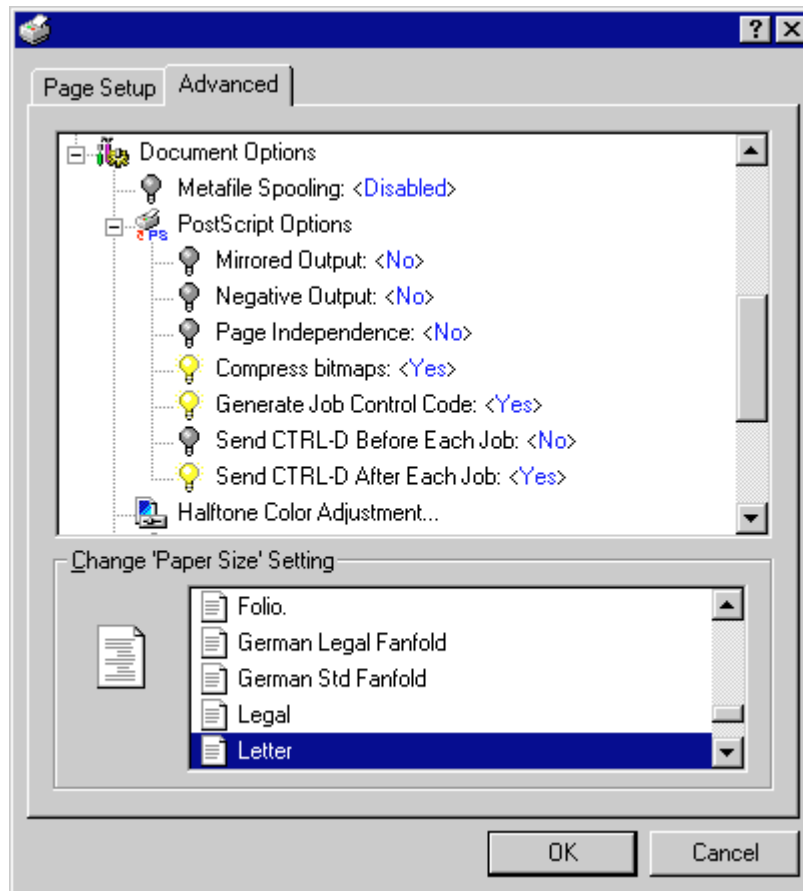
4-6 Graphic (KPD2 Driver)

- **Resolution:**
Specify the desired print resolution. The resolution must be specified in the number of dots per inch (dpi). Select between “600 x 600 dots per inch” and “300 x 300 dots per inch”. The factory default setting is “600 dots per inch”.

4. Printer Driver for WindowsNT

4-7 Document Options (KPD2 Driver)

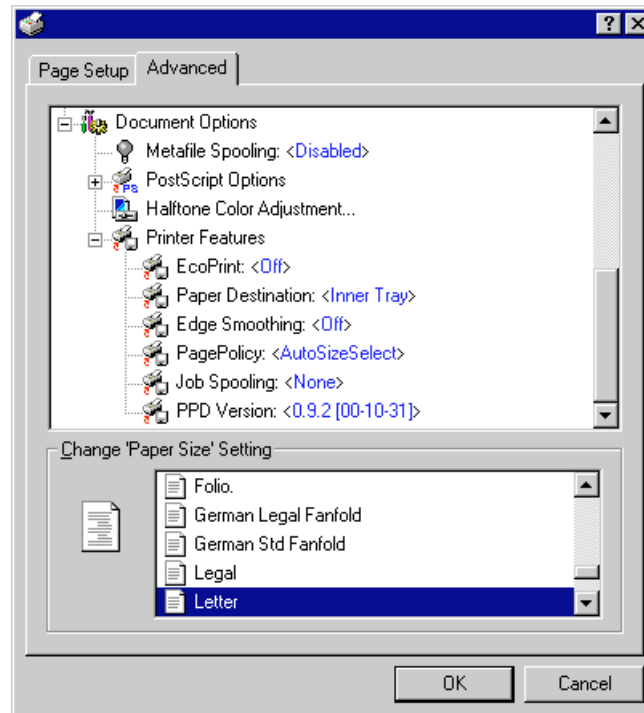
4-7-1 PostScript Options:



Allows you to make PostScript-related settings. Refer to On-Line Help for more detailed information.

4. Printer Driver for WindowsNT

4-7-2 Printer Features



■ EcoPrint:

Saves on toner. Setting can be made in the “Change ‘EcoPrint’ Setting” area. The factory default setting is “Off”.

■ Edge Smoothing:

Turning this setting “On” allows the jaggies that appear around the edge of text and graphics to be evened out through the smoothing process.

■ PagePolicy:

Perform this setting in conjunction with the settings to be made under “Paper source” on page 4-4.

[Auto Size Select] Select this setting when you want to select “Automatically Select” under “Paper source”.

[Cassette Base] Select this setting when you want to select the source of paper feed according to the tray under “Paper source”.

* If you are going to select “Automatically Select” under “Paper source”, be sure to select “Auto Size Select” here or there is a possibility that printing will be accomplished onto paper that is difference the expected.

■ Job Spooling:

Allows you to select whether to sort the copies in the case of multiple copy.

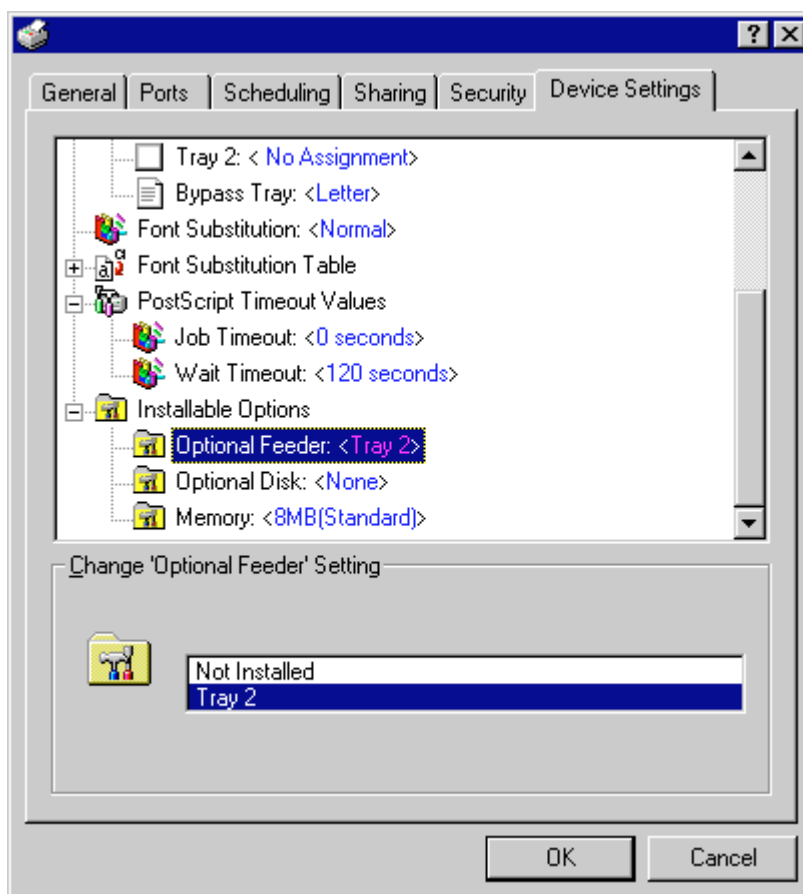
[None] Does not sort.

[Sort] Prints in the order of 1st, 2nd, 3rd copies and so on.

* It is necessary to create a RAM disk. (Refer to page 4-7.)

4. Printer Driver for WindowsNT

4-8 Device Settings Tab



In order to access the device settings, select "Properties" in step 4 on page 4-1 and then click on the "Device Settings" Tab.

<Universal Driver>

■ Installed Memory (Kilobyte)

Perform this setting according to the amount of memory in your printer. If a mistake is made in this setting, there is a possibility that printing will not be accomplished properly.

<KPDLL2 Driver>

■ Optional Feeder

Perform this setting according to the installed Option Cassette.

■ Optional Disk

Perform this setting when you want to create a RAM disk. Refer to "Chapter 1, 2-2 RAM Disk" on page 2-1 for more detailed information on creating a RAM disk.

* In order to create a RAM disk, it is necessary to increase the memory capacity of your printer. After increasing memory, perform the setting here according to the "Memory" setting below.

■ Memory

Perform this setting according to the amount of memory in your printer. If a mistake is made in this setting, there is a possibility that printing will not be accomplished properly.

5. Printer Driver for Windows2000

The following procedure explains the functions of the Universal driver and the KPDL2 driver for those who use Windows 2000 as their operating system.

- * Depending upon version upgrades of the printer driver, the screenshots shown here may differ somewhat from that of the actual printer driver.
- * Refer to the Instruction Manual for Windows or to On-Line Help for information regarding items that are not explained in this Instruction Handbook.
- * If you use the KPDL 2 driver, be sure to set the emulation mode in the printer to "KPDL" or "KPDL(AUTO)".

5-1 Opening the Printing Preference Window

1

Start Windows2000.

2

Click on [Start] on the task bar.

The Start menu will appear.

3

Use the mouse to point to [Settings].

A submenu will appear, so click on [Printers].

The [Printers] folder will open.

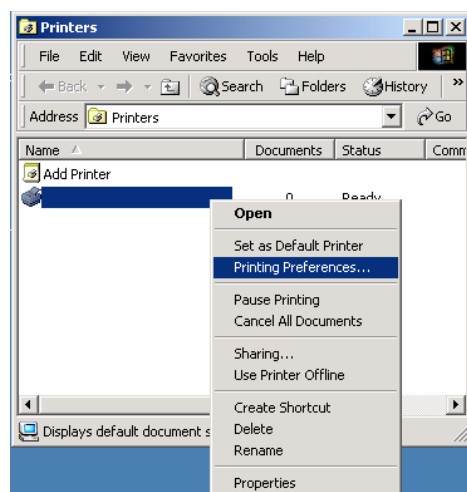
4

Use the right mouse button to click on the icon for this printer. A pop-up menu will be displayed.

Select [Printing Preferences] from the menu.

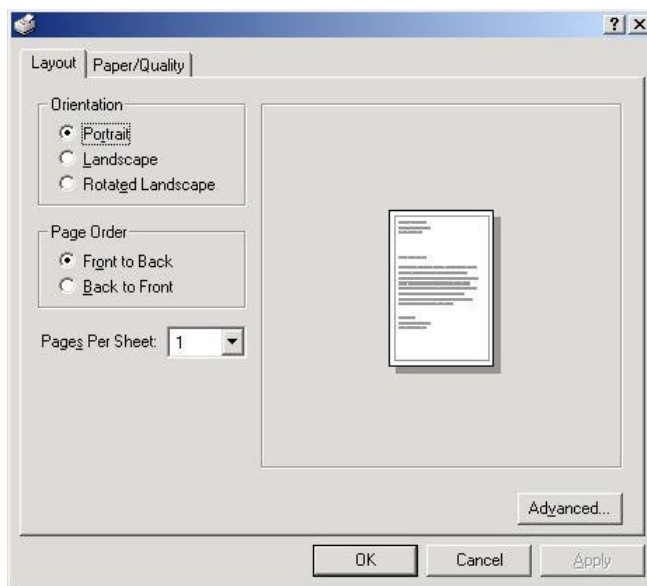
The Printing Preferences window will open.

* When you are making settings for optional equipment, select [Properties] here and then click on the [Device Settings] Tab.



5. Printer Driver for Windows2000

5-2 Layout Tab



■ Orientation

Select the print orientation from the following:

[Portrait] Prints lengthwise.

[Landscape] Prints widthwise.

[Rotated Landscape] Selecting this option prints upside down. (only available with KPDL2 Driver)

■ Page Order

The Printer has the ability to print from the 1st page or from the last page.

* It is necessary to enable "Advanced Printing Features" in order to perform this setting. Refer to "■ Advanced Printing Features" on page 5-5.

[Front to Back] Print from 1st page print from page.

[Back to Front] Print from last page.

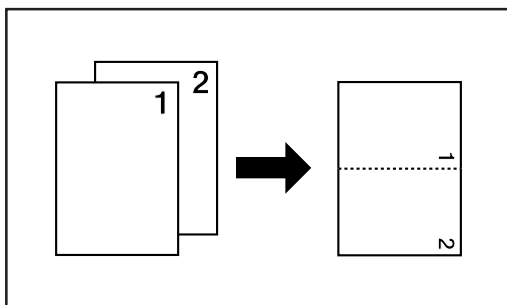
■ Page Per Sheet (N-up)

Prints multiple pages on a single paper (number of pages: 1,2,4,6,9,16). (This is called combined print.) The pages are reduced automatically so that all the pages can be put on one page. The factory default setting is "1" (1 page on each paper).

* It is necessary to enable "Advanced Printing Features" in order to perform this setting. Refer to "■ Advanced Printing Features" on page 5-5.

Example: With 2-Up printing

Prints reduced images of 2 full pages onto a single sheet of paper.

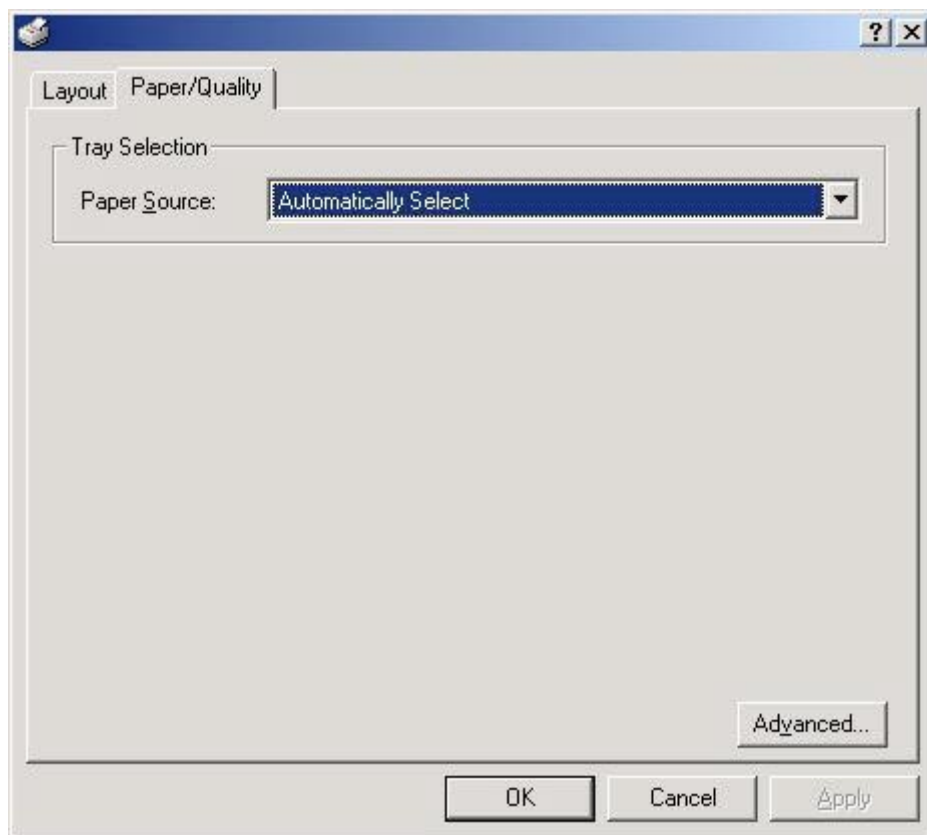


■ Advanced:

Click this button in order to open the Advanced Options dialog box. Refer to "5-4 Advanced Options" on page 5-4 for more detailed information.

5. Printer Driver for Windows2000

5-3 Paper/Quality Tab : (Tray Selection)



■ Paper Source: (Universal Driver)

Select the desired location of paper feed from the pulldown menu. The factory default setting is "Automatically Select".

* Items marked with an exclamation point (!) are currently unavailable. Refer to "5-5 Device Settings" and complete the appropriate setting for the corresponding function in order to use that item.

■ Paper Source: (KPDL2 Driver)

Select the desired location of paper feed from the pulldown menu. The factory default setting is "Automatically Select".

* It is necessary to perform the settings under "Page Policy" on page 5-6 BEFORE making settings here. If you want to select the source of paper feed according to the tray, make sure that "Cassette Base" is selected there.

If you select "Automatically Select" here, be sure that the "Page Policy" setting is set to "Auto Size Select" or there is a possibility that printing will be accomplished onto paper that is different than expected.

■ Advanced:

Click this button in order to open the Advanced Options dialog box. Refer to "5-4 Advanced Options" on page 5-4 for more detailed information.

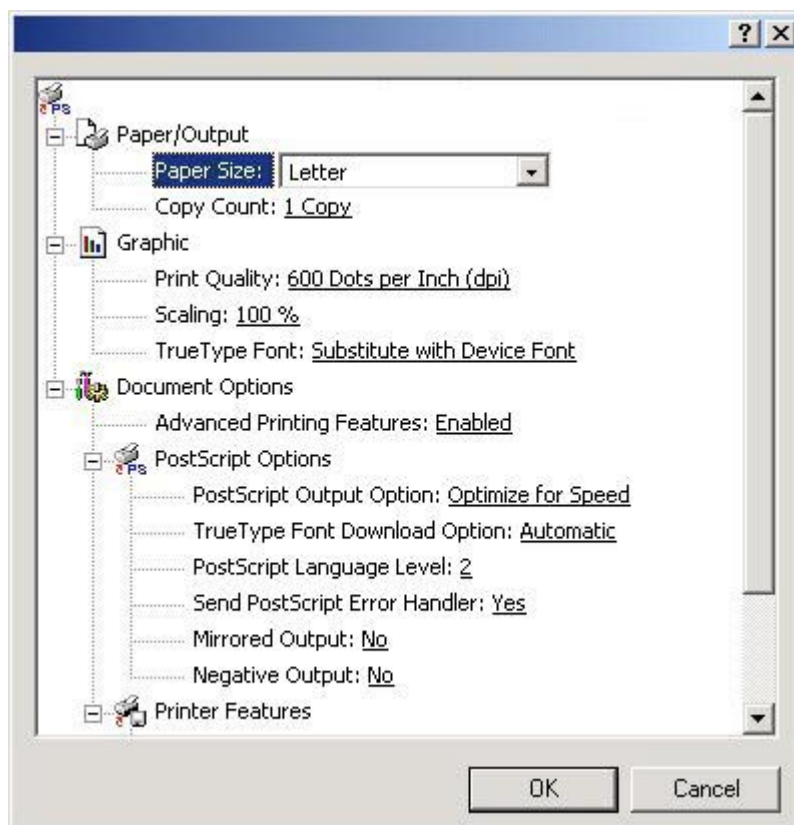
5. Printer Driver for Windows2000

5-4 Advanced Options

The following explains the Advanced Options dialog box.

* The explanations here are focused mostly on the special features of this product. Refer to On-Line Help for information regarding items that are not explained in this Instruction Handbook.

5-4-1 Paper/Output



■ Paper Size:

Select the size of standard-size paper sheet or envelope. Selection can be made in the drop-down list.

The following standard-size paper sheets and envelopes can be used with this printer:

Standard-size paper sheet	Letter (8 1/2" × 11"), Legal (8 1/2" × 14"), Statement (5 1/2" × 8 1/2"), A4, A5, A6, Folio (210 × 330 mm), JIS B5, JIS B6
Envelope	COM-10, Monarch, DL, C5

■ Copy Count:

Set the number of copies to be made. The allowable range is from 1 to 999.

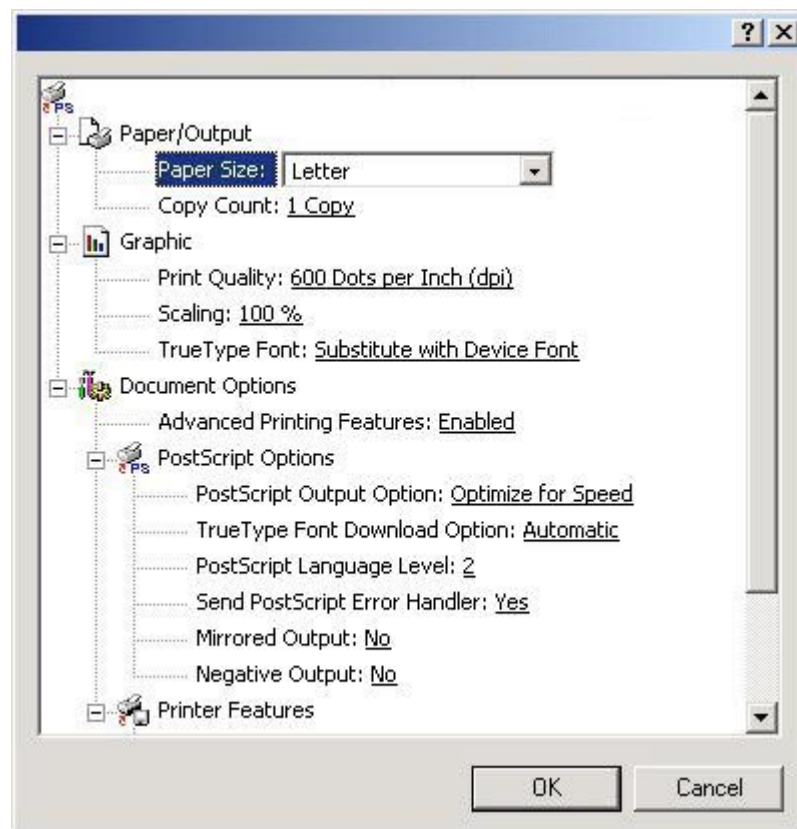
5-4-2 Graphics

■ Print Quality:

Specifies the printing resolution (number of dots per inch) to be used when printing. Select between "600 x 600 dots per inch" and "300 x 300 dots per inch". The factory default setting is "600 dots per inch".

5. Printer Driver for Windows2000

5-4-3 Document Options

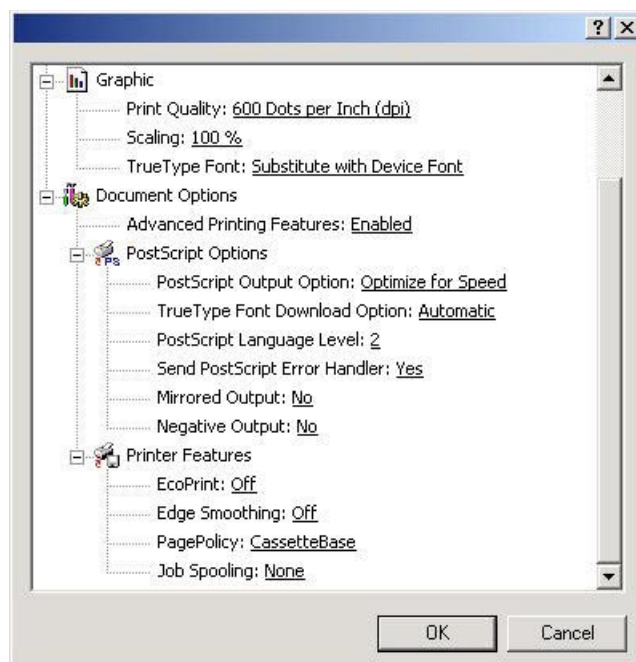


■ **Advanced Printing Features:**

Be sure to select "Enable" for this setting if you want to use the "Pages Per Sheet" (N-Up) function or the "Back to Front" option under the "Page Order" setting.

5. Printer Driver for Windows2000

5-4-4 Printer Features



■ Eco print:

Saves on toner. The factory default setting is "Off".

■ Edge Smoothing:

Turning this setting "On" allows the jaggies that appear around the edge of text and graphics to be evened out through the smoothing process.

■ PagePolicy: (only available with KPDL2 Driver)

Perform this setting in conjunction with the settings to be made under "Paper Source" on page 5-3.

[Auto Size Select] Select this setting when you want to select "Automatically Select" under "Paper Source".

[Cassette Base] Select this setting when you want to select the source of paper feed according to the tray under "Paper Source".

* If you are going to select "Automatically Select" under "Paper Source", be sure to select "Auto Size Select" here or there is a possibility that printing will be accomplished onto paper that is difference the expected.

■ Job Spooling:

Allows you to select whether to sort the copies in the case of multiple copy.

[None] Does not sort.

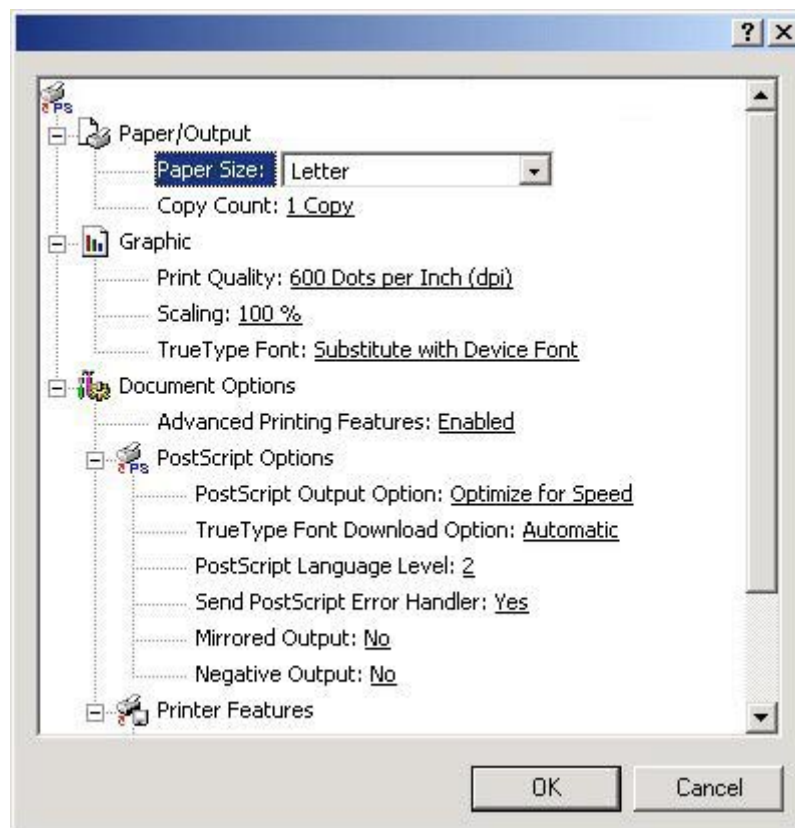
[Temporary] Prints in the order of 1st, 2nd, 3rd copies and so on.

* If you are using a KPDL2 Driver, it is necessary to create a RAM disk. (Refer to page 5-8.)

* If you are using a Universal driver, it is necessary to increase the memory capacity of your printer and then change the "Memory" setting to more than 24 MB. (Refer to page 5-8.)

5. Printer Driver for Windows2000

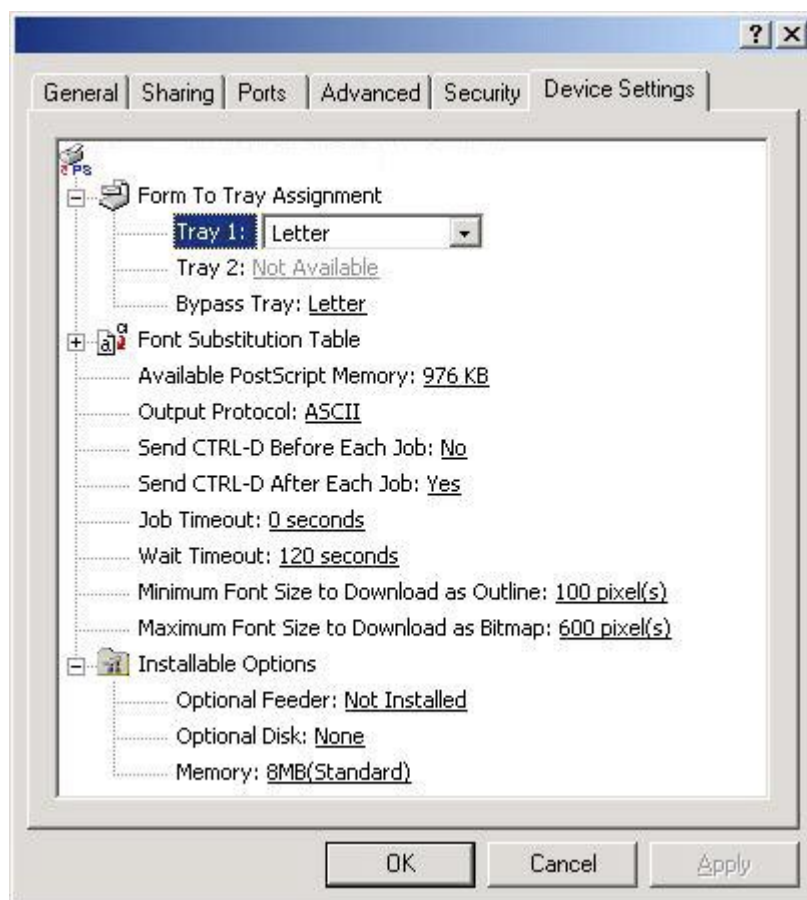
5-4-5 PostScript Options:



This option can only be used with a KPD2 Driver.
Allows you to make PostScript-related settings. Refer to On-Line Help for more detailed information.

5. Printer Driver for Windows2000

5-5 Device Settings Tab



In order to view this window and make settings for optional equipment, select "Properties" in step 4 on page 5-1 and then click on the "Device Settings" Tab.

Perform the settings here whenever you add optional equipment. The functions of the optional equipment will only be available to the printer after you have completed the setting here. The optional equipment available for selection are as follows.

■ Optional Feeder

Perform this setting according to the installed Option Cassette.

■ Optional Disk (only available with KPDL2 Driver)

Perform this setting when you want to create a RAM disk. Refer to "Chapter 1, 2-2 RAM Disk" on page 2-1 for more detailed information on creating a RAM disk.

* In order to create a RAM disk, it is necessary to increase the memory capacity of your printer. After increasing memory, perform the setting here according to the "Memory" setting below.

■ Memory

Perform this setting according to the amount of memory in your printer. If a mistake is made in this setting, there is a possibility that printing will not be accomplished properly.

6. Printer Driver for Macintosh

When using unit as a network printer, it is possible to print PostScript files from a Macintosh Computer. This section contains explanations regarding the procedure to install the Macintosh PPD files and select this printer, as well as explanation about the computer environment required to run the installed files.

Attention (Macintosh)

*When using the Printer driver, change the emulation setting KPDL or KPDL (AUTO).

6-1 Required computer environment

*OS: system 7.61 later

*CPU: Minimum Power PC

*RAM: Minimum 24MB

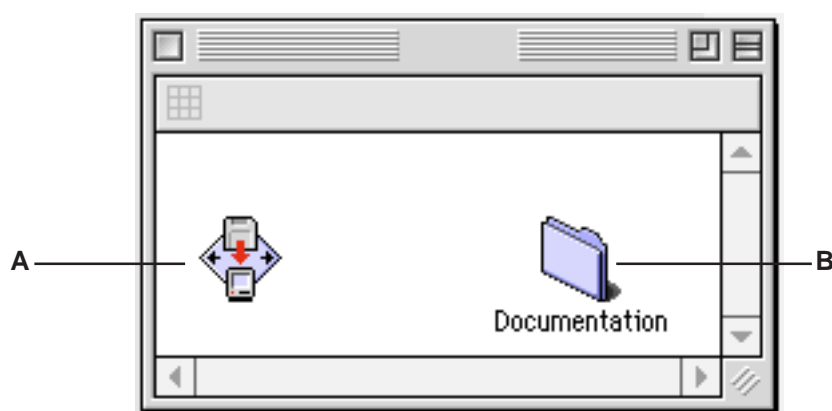
*Free hard disk space: Minimum 10MB

*CD-ROM drive: 1 drive

6-2 Installing the PPD files

This section explains the screen that appears when the CD-ROM supplied with the Printing System (M) is inserted into the CD-ROM drive.

*All the screens to use for explanation are samples, and a screen may be different by a version of utilized software to some extent.



A: [Install Drivers]

Click to start installation of the printer driver. Follow the instructions displayed on the screen to install the printer driver.

B: [Documentation]

Click to display the manual (PDF file) supplied with the printer driver. To open this PDF manual, Adobe Acrobat Reader (developed to view PDF files) is required, so make sure that Adobe Acrobat Reader is installed before opening the manual.

[Install Acrobat Reader] Installs Adobe Acrobat Reader.

[Printer Manuals] Displays the manuals (PDF) of the printer and printer driver. They explain the installation procedure of the printer driver and operation procedure of the printer.

[Readme] This file contains information which is not explained in the manuals. Please read this file before using the printer driver.

1

Start up your Macintosh computer.

Insert the CD-ROM disk that is included with this product into a CD-ROM drive.

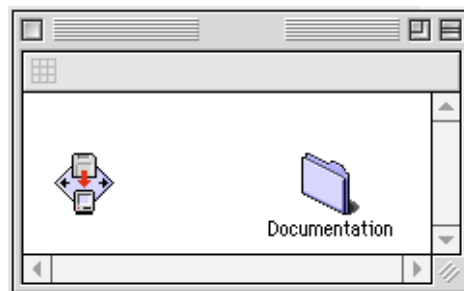
*If there is starting other program, please be finished.

* Screens are things of Mac OS 8.1.

6. Printer Driver for Macintosh

2

Double-Click on the icon for the CD-ROM disk.
“A copy machine product name of use” dialog box will appear.



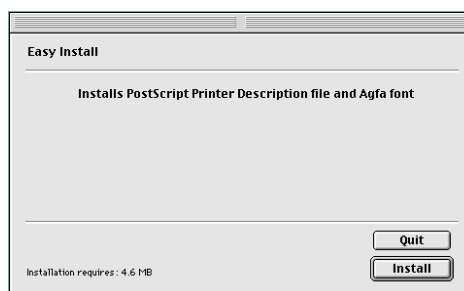
3

Double-Click on “the copy machine product name of use” Installer icon.
The window shown on the right will appear. Click on “Continue”.



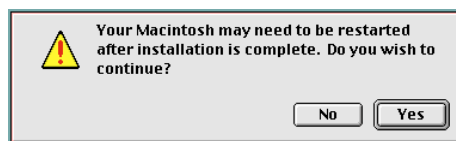
4

A dialog box will appear.
Click on [Install].



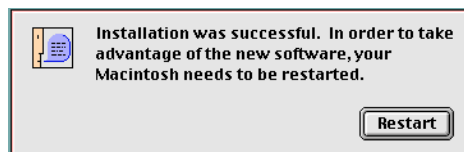
5

A dialog box will appear.
Click on [Yes].



6

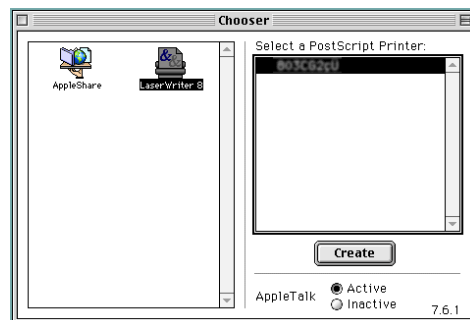
Installation was finished.
Click on [Restart], and start again.



6. Printer Driver for Macintosh

7

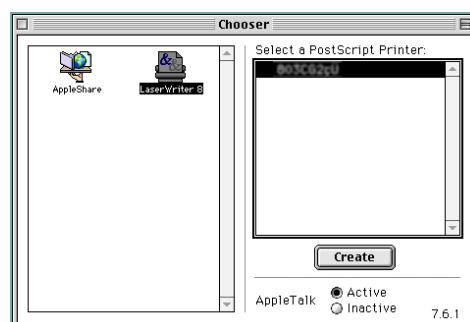
Access the Apple Menu at the far left of the Menu of Bar and select Chooser. The Chooser will appear. Click once on the LaserWriter 8 icon.



8

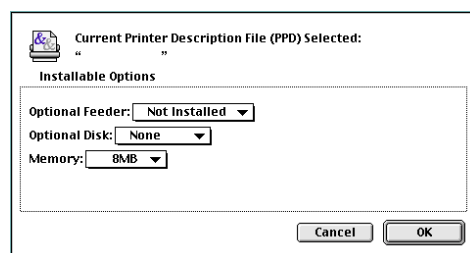
Select the name of this printer in the [Select a PostScript Printer] list and then click on the [Create] button.

* The name of this printer can be verified by printing out a Status Page from the printer's operation panel.



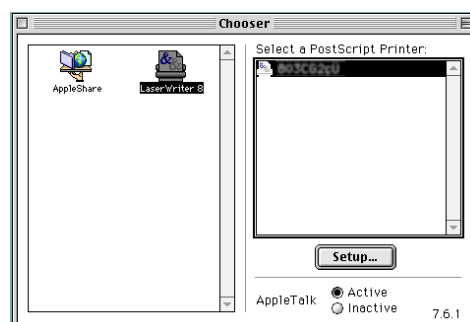
9

A dialog box for selecting the appropriate options will appear. Select the option that are currently installed in or on your printer.



10

Once you're finished with the settings, click on [OK], the chooser will be displayed again.



11

Make sure that the name of this printer is selected (highlighted) in the "Select a PostScript Printer" list and close the Chooser.

6. Printer Driver for Macintosh

6-3 General Dialog Box

*The actual layout of each dialog box and the available option and settings may differ somewhat depending upon the application and version of LaserWriter that you are using.

Printer: Destination: Z1-8.5.1

General

Copies:

Pages: ☒ All ☐ From: To:

Paper Source: ☒ All pages from:

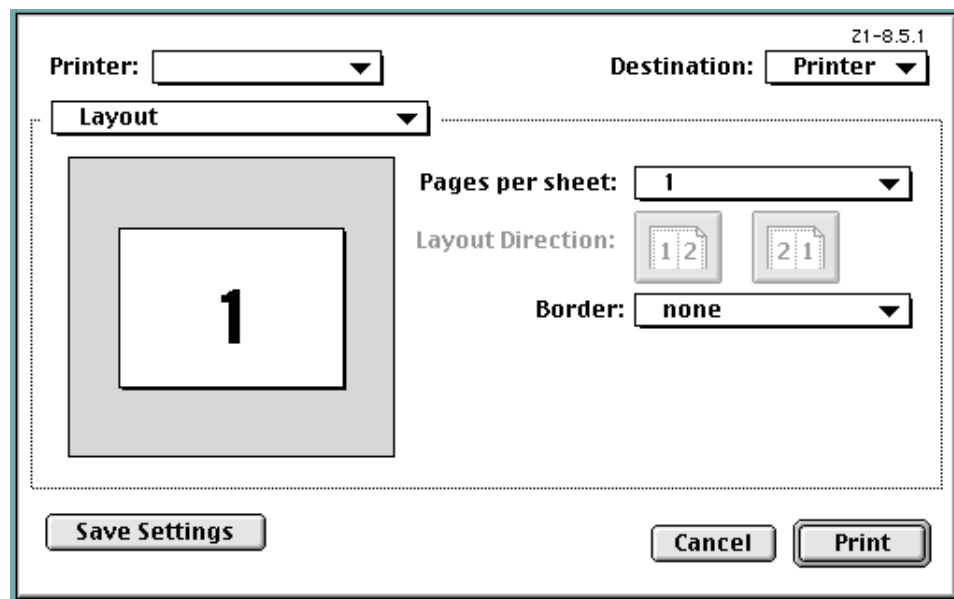
☐ First page from:

Remaining from:

- **Printer:**
Selects the desktop printer to be used for printing your document.
- **Copies:**
Type the desired number of prints to be made (or the number of files to be saved to disk) directly into this field.
Select a number between 1 - 999.
- **Pages:**
To print all of the pages in a file, select the All radio button. To print only certain pages, type in from what page (in the From field) to what page (in the To field) you want to print.
- **Paper Source:**
Select the desired location of paper feed from the dropdown list. The factory default setting is "Auto Select".
* It is necessary to perform the settings under "Page Policy" on page 6-6 BEFORE making settings here. If you want to select the source of paper feed according to the tray, make sure that "Cassette Base" is selected there. If you select "Auto Select" here, be sure that the "Page Policy" setting is set to "Auto Size Select" or there is a possibility that printing will be accomplished onto paper that is difference the expected.

6. Printer Driver for Macintosh

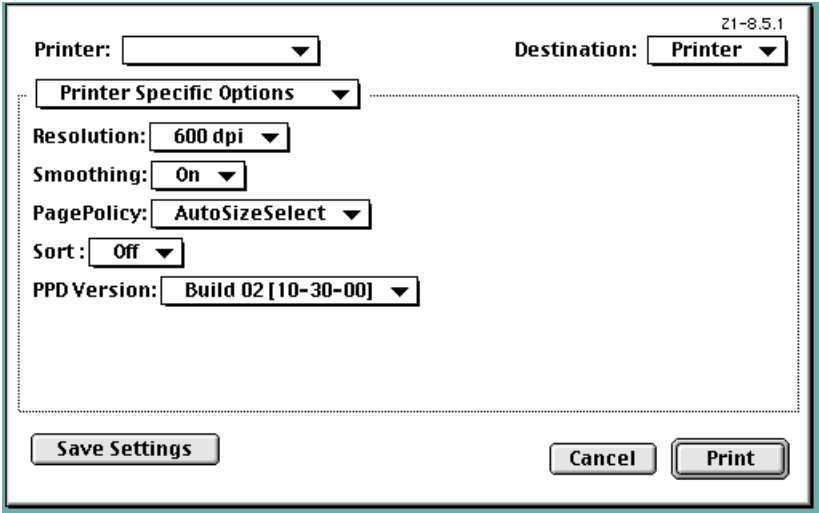
6-4 Layout Dialog Box



- **Pages per sheet:**
Sets the number of pages to be printed on each sheet of paper.
- **Layout Direction:**
A button of either is clicked, and a layout direction is decided. If right button is selected, the pages are laid out from right to left.
- **Border:**
Sets the type of line to appear around the page.

6. Printer Driver for Macintosh

6-5 Printer Specific Options



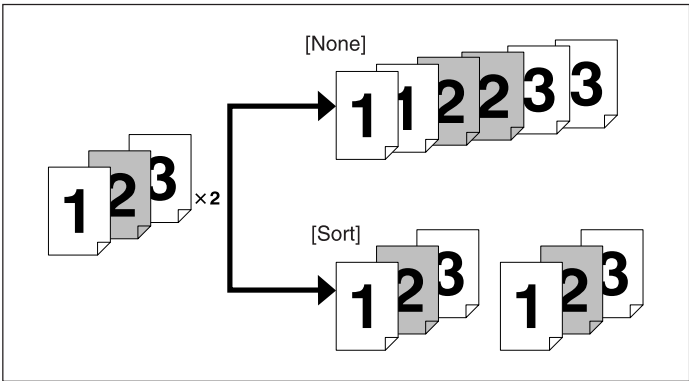
- **Resolution:**
Specifies the printing resolution (number of dots per inch) to be used when printing. Select between “600 dpi” and “300 dpi”. The factory default setting is “600 dpi”.
- **Smoothing:**
Turning this setting “On” allows the jaggies that appear around the edge of text and graphics to be evened out through the smoothing process.
- **PagePolicy:**
Perform this setting in conjunction with the settings to be made under “Paper source” on page 6-4.

[Auto Size Select] Select this setting when you want to select “Auto Select” under “Paper source”.
[Cassette Base] Select this setting when you want to select the source of paper feed according to the tray under “Paper source”.

* If you are going to select “Auto Select” under “Paper source”, be sure to select “Auto Size Select” here or there is a possibility that printing will be accomplished onto paper that is difference the expected.
- **Sort:**
Allows you to select whether to sort the copies in the case of multiple copy.

[Off] Does not sort.
[On] Prints in the order of 1st, 2nd, 3rd copies and so on.

* It is necessary to create a RAM disk. (Refer to step 9 on page 6-3.)



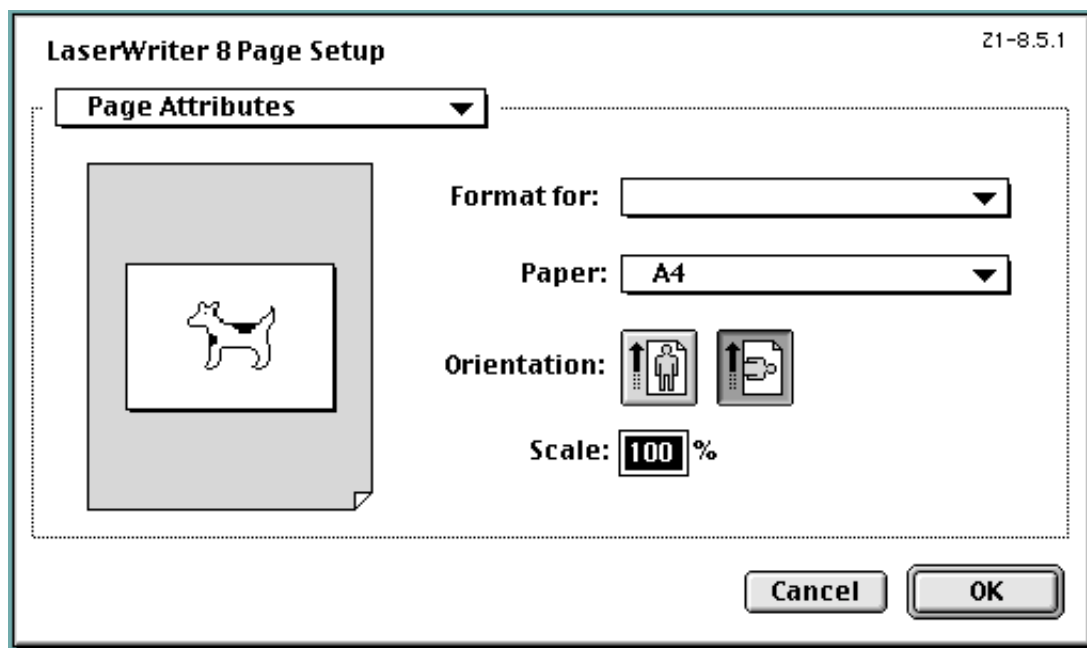
6. Printer Driver for Macintosh

6-6 Page Setup dialog Dialog Box

Settings for paper size, page layout, magnification ratio and print direction (orientation) are performed in the **Page Setup** dialog box. To display the **Page Setup** dialog box, select **Page Setup...** in the **File** menu of the corresponding application.

* The actual layout of each dialog box and the available options and settings may differ somewhat depending upon the application and the version of **LaserWriter** that you are using.

* For the user using **Mac OS 7.6.1**, we strongly recommend that you update the **LaserWriter 8.3.2** to **Laser Writer 8.5.1**.



■ **Format for:**

Use this pop-up menu to select the Printer that you want to use.

■ **Paper:**

Select in this pop-up list the desired paper size. Choose from among Letter, Legal, Folio, Statement, A4, Custom, A5, A6, B5(JIS), B6(JIS) and Envelopes (Monarch, Com 10, DL, C5)

* ALWAYS use the multi-bypass to feed the following sizes: A6, B5(JIS), B6(JIS), Envelopes (Monarch, Com 10, DL, C5)

■ **Orientation:**

Enable selection of the desired print direction.

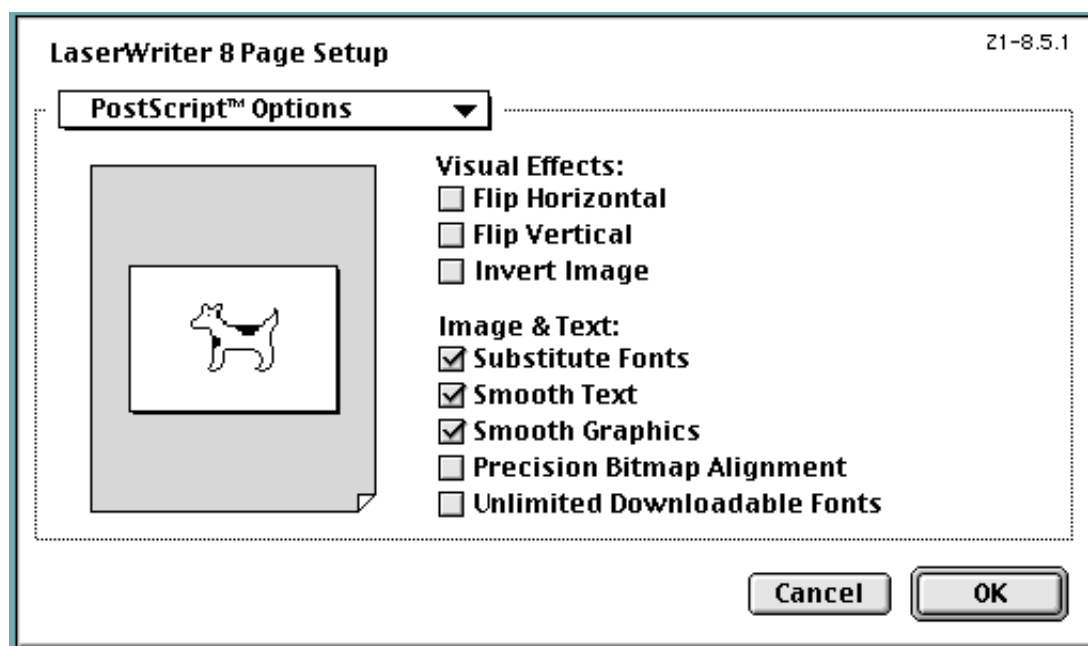
■ **Scale:**

Type the desired magnification ratio directly into this field. Select a ratio between 25% - 400%.

6. Printer Driver for Macintosh

6-7 PostScript Dialog Box

The actual layout of each dialog box and the available options and settings may differ somewhat depending upon the application and the version of **LaserWriter** that you are using.



■ **Visual Effects:**

Visual effects such as horizontal and vertical flip and image inverting can be selected here. Place a check in the check box next to the desired visual effects to select that effect.

■ **Image & Text:**

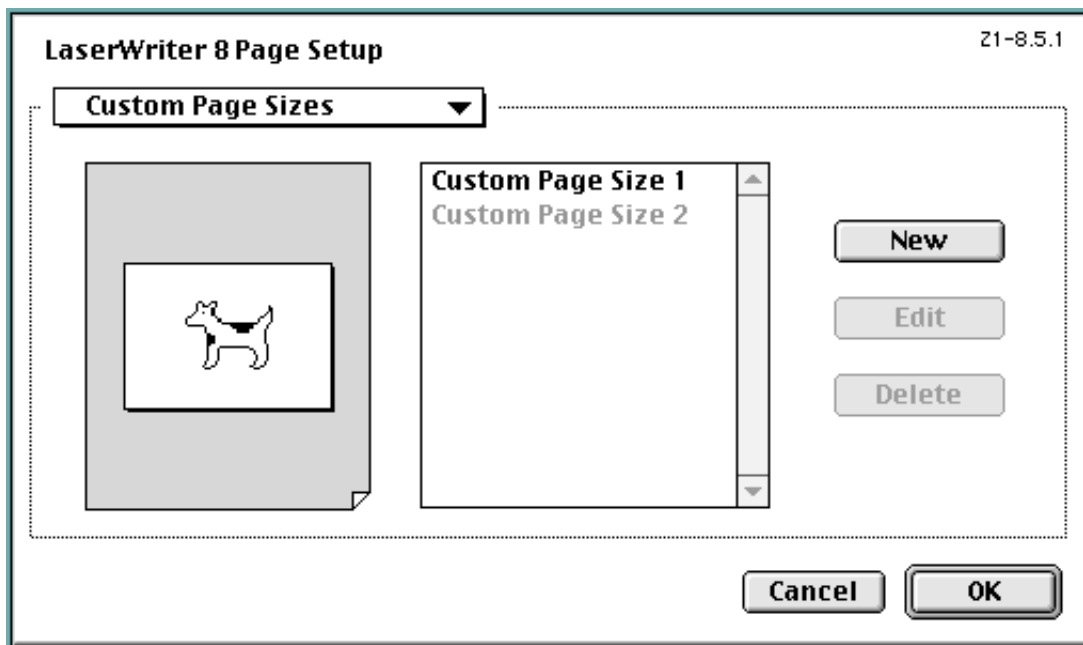
Place a check in the check box next to the desired printing options to select that option.

6. Printer Driver for Macintosh

6-8 Custom paper sizes Dialog Box

When a paper size is selected in "Custom paper sizes" Dialog Box, the paper size can be set as desired.

* The actual layout of each dialog box and the available options and settings may differ somewhat depending upon the application and the version of LaserWriter that you are using.



■ **New button**

To create a new custom page size, click this button.

* The acceptable paper width is between 9.81 - 21.59 cm (metric) or 3.86" - 8.5" (inches). The acceptable paper length is between 14.82 - 35.56 cm (metric) or 5.83" - 14" (inches).

■ **Edit button**

To edit the selected custom page size, click this button.

■ **Delete button**

To delete the selected custom page size, click this button.